

H.E. Williams, Inc.

ICEHZ & QLHZ Series:

HAZARDOUS LOCATION AREA LIGHTS!

FEARLESS INDUCTION LIGHTING FOR HAZARDOUS LOCATIONS!

Tough. Heavy-duty. Long-lasting. The ICEHZ2 and QLHZ2 are specifically engineered to perform in hazardous location applications—where fire or explosion hazards may exist due to flammable gases, vapors, or liquids, combustible dust, or ignitable fibers.

Designed using Williams' heavy-duty die-cast housing and premium silicone gasketing, both series are dark-sky friendly and feature 100,000-hour induction lighting for years of maintenance-free performance.

Worthy fixtures that are proudly made in the USA, the ICEHZ2 and QLHZ2 are 3g vibration certified, IP66 certified, NEMA 4x, and wet location listed for excellent performance in refineries, utility plants, mills and other extreme environments.

QLAL2—QL INDUCTION AREA LIGHT

In addition to the two Hazardous Location fixtures above, Williams Outdoor offers a QL Induction Area Light, the QLAL2. Designed with the same hallmark construction of our existing induction area lights, this fixture uses the Philips QL system for long life and superior performance.

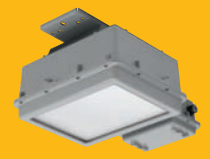
ICEHZ2



QLHZ2



QLAL2



H.E. Williams, Inc.
831 W. Fairview Ave.
Carthage, MO 64836
Ph: 417-358-4065
Fax: 417-358-6015

A Visible Difference™