

WARNING:

- Read instructions carefully before attempting to install fixture.
- Retain instructions for future reference.
- When opening boxes verify that materials match packing slip. Please call your agent or distributor if there is any discrepancy of materials.
- Install in accordance with NEC and your local electric code. See page 2 for lamp chart and mounting positions.
- This product must be installed in accordance with the applicable local, state, and national electrical codes (NEC) by a licensed person familiar with the construction and operation of the product and the hazards involved.
- Make sure all electrical power is turned off while installing the fixture.
- This fixture must be adequately grounded for protection against shock hazards and to assure proper operation.
- External parts of fixture develop high operating temperature. To avoid pain or injury do not touch external parts of fixture when it is in operation.
- Disconnect power before servicing.
- Always use correct lamp type and wattages.
- Low voltage circuits must be overload protected. Power supplies require secondary protection with circuit breakers or fuses sized for the load. Product is listed for UL 2108 listed Class I power supply with secondary protection.
- Maximum conductor load is 25 Amps. De-rate as required by code.

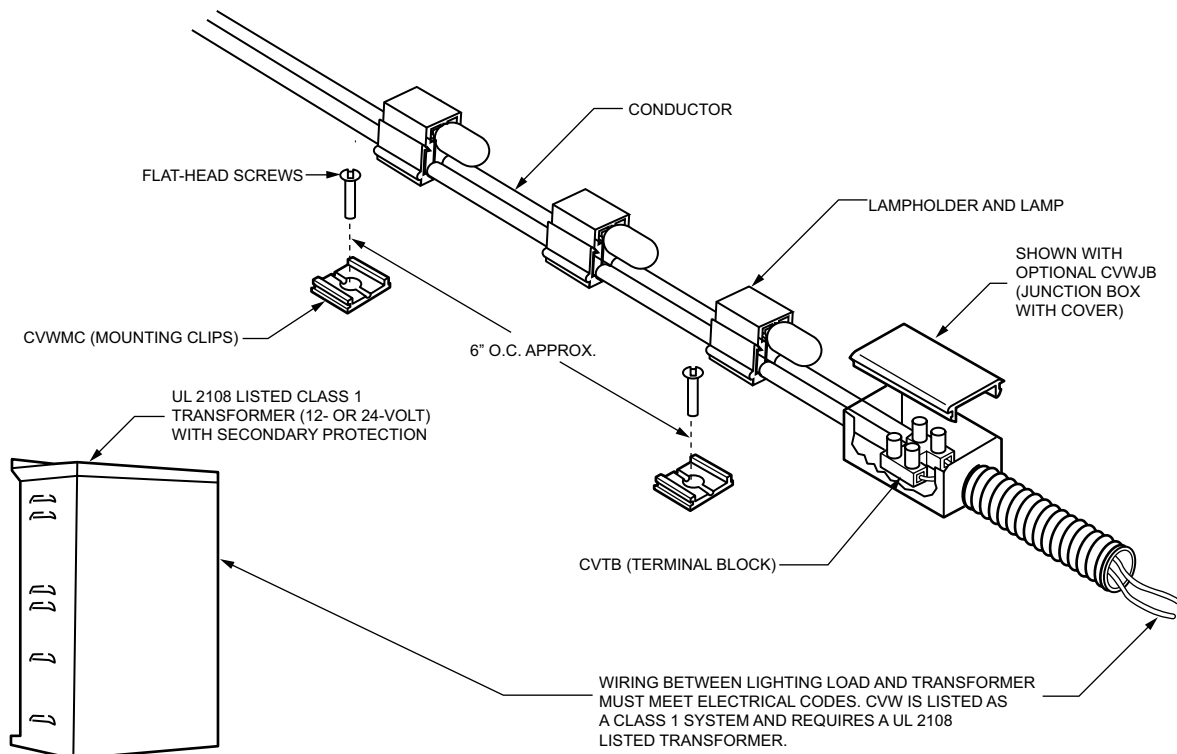
Step 1: To determine location of mounting clips place conductor along cove area, cut and place as required.

Step 2: Install mounting clips (CVWMC) approximately 6 inches on center. Attach using flat-head screws. Tighten screws making sure screws are flush or lower than top of mounting clip.

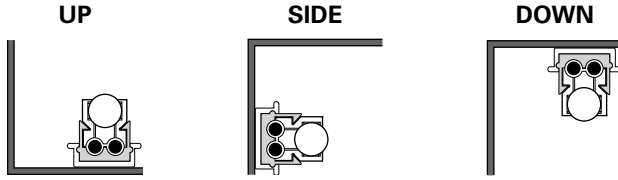
Step 3: Snap lampholder into mounting clips.

Step 4: Connect low voltage power to terminal block or optional junction box (CVWJB) and replace cover. The system may be 12- or 24-volts. **Refer to packing slip to confirm system voltage.**

Step 5: Verify that voltage load at terminal block does not exceed system load (12V or 24V depending on system). If load is more than system is specified to handle it is strongly recommended that a dimmer be installed.



MOUNTING POSITIONS



Warning: Operating incandescent lamps over the rated voltage will reduce lamp life dramatically.

OVER-RATED BULB VOLTAGES (100% >)

VOLTS %	AMPS %	MSCP %	LIFE %
100	100	100	100
101	100.5	103.5	88.7
102	101.1	107.2	78.8
103	101.6	110.9	70.1
104	102.2	114.7	62.5
105	102.7	118.6	55.7
110	105.4	139.6	31.9
115	108.0	163.1	18.7
120	110.5	189.3	11.2
125	113.1	218.4	6.9
130	115.5	250.5	4.3

EXAMPLE

A lamp designed to operate at 24 volts, that is actually operated at 103% of the design voltage or 24.72 volts, will reduce the average lamp life to 70.1% of the rated life.

NOTE

Voltage fluctuations, vibrations and excessive heat will also reduce the average lamp life.

LAMP LIFE DEFINITION

As an industry standard guideline, the "Rated Lamp Life" of incandescent lamps is the point at which 50% of an infinitely large sample group of lamps will have failed.

Under laboratory conditions, "Rated Lamp Life" does not mean that every lamp will burn the listed number of hours. Failures can be expected to begin as early as 30%-40% of the "Rated Lamp Life" and will increase in frequency until half of the lamps have failed when the "Rated Lamp Life" is reached. The remaining lamps will fail at some point beyond the "Rated Lamp Life".

IMPORTANT SAFETY INSTRUCTIONS

- Read all instructions.
- Do not conceal or extend exposed conductors through a building wall.
- Do not install this system in wet locations.
- For low voltage exposed insulated conductor systems. Do not install any part of this system less than 7 feet (2.2 m) above the floor.
- To reduce the risk of fire and burns do not install this lighting system where the exposed bare conductors can be shorted or contact any conductive materials.
- To reduce the risk of fire and overheating make sure all connections are tight.
- Do not install any luminaire closer than 6 inches (15.25 cm) from any curtain or similar combustible materials.
- Turn off electrical power before modifying the lighting system in any way.

INSTRUCTIONS PERTAINING TO A RISK OF FIRE, OR INJURY – LIGHTED LAMP IS HOT!

Warning – To reduce risk of FIRE OR INJURY:

- Turn off power and allow to cool before replacing lamp.
- Lamp gets HOT quickly! Contact only switch/plug when turning on.
- Keep lamp away from materials that may burn.
- Do not touch the lamp at any time. Use a soft cloth. Oil from skin may damage lamp.

SAVE THESE INSTRUCTIONS FOR FUTURE REFERENCE