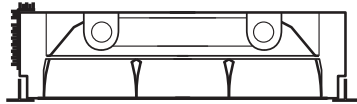


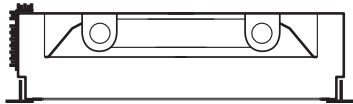
Induction Recessed 2'x2' Instruction Sheet

Installation

- 1 Place the fixture into the T-bar ceiling so that the sides and ends are resting on the T-bar, as shown in the graphic below.



Parabolic Troffer

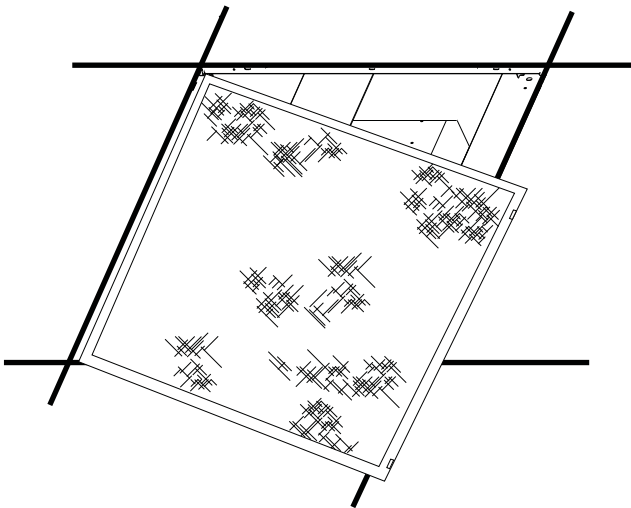


Lensed Troffer

- 2 Make the appropriate electrical connections.

Note: Fixture is to be installed by a qualified electrician. Must be wired in accordance with the N.E.C. and state and local codes.

- 3 Disengage the (2) latches on the door frame, and swing the door open. Place the lamps into the fixture. Close the door frame, making certain the latches are in the locked position. (For lensed fixtures only)



Maintenance

Cleaning: Use a non-abrasive cloth and warm water to clean the acrylic shielding or parabolic louver as well as the exterior of the fixture.

