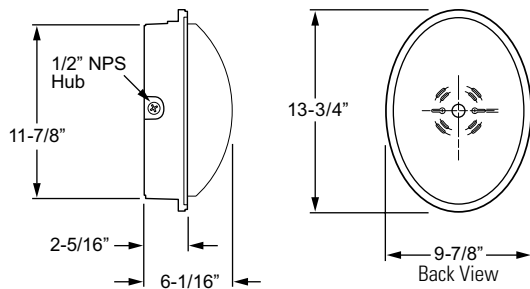


**Read instructions carefully before attempting to install luminaire.
Retain instructions for future reference.**

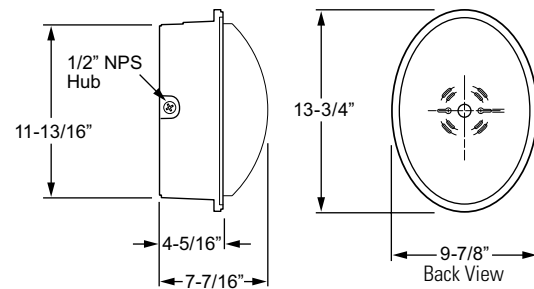
Warnings:

- This product must be installed in accordance with the applicable local, state, and national electrical codes by a licensed person familiar with the construction and operation of the product and the hazards involved.
- Make sure all electrical power is turned off while installing the luminaire.
- This luminaire must be adequately grounded for protection against shock hazards and to assure proper operation.
- External parts of fixture develop high operating temperature. To avoid pain or injury, do not touch external parts of luminaire when it is in operation.
- Disconnect power before servicing.
- Always use correct lamp type and wattage.

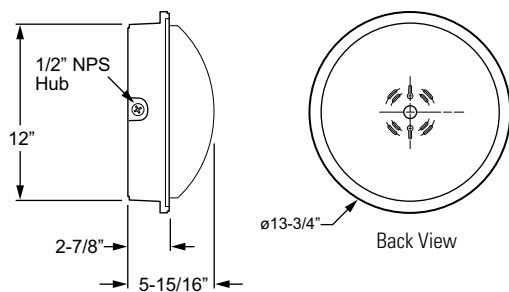
WAVO2



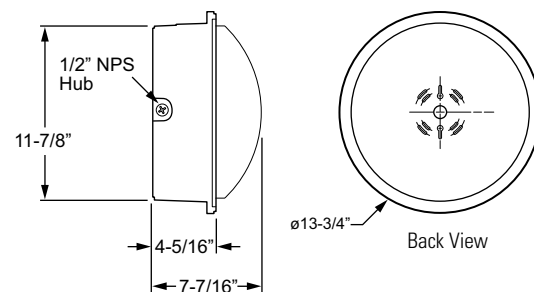
WAVO3



WAVR2



WAVR3



BOLT CIRCLE PATTERN

