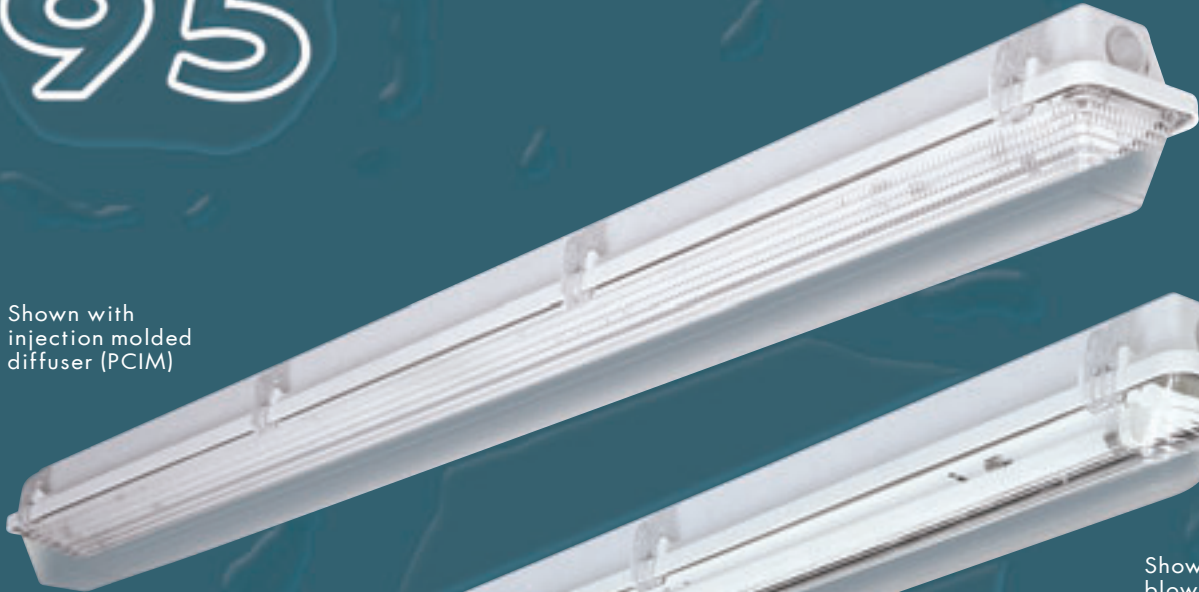


SERIES

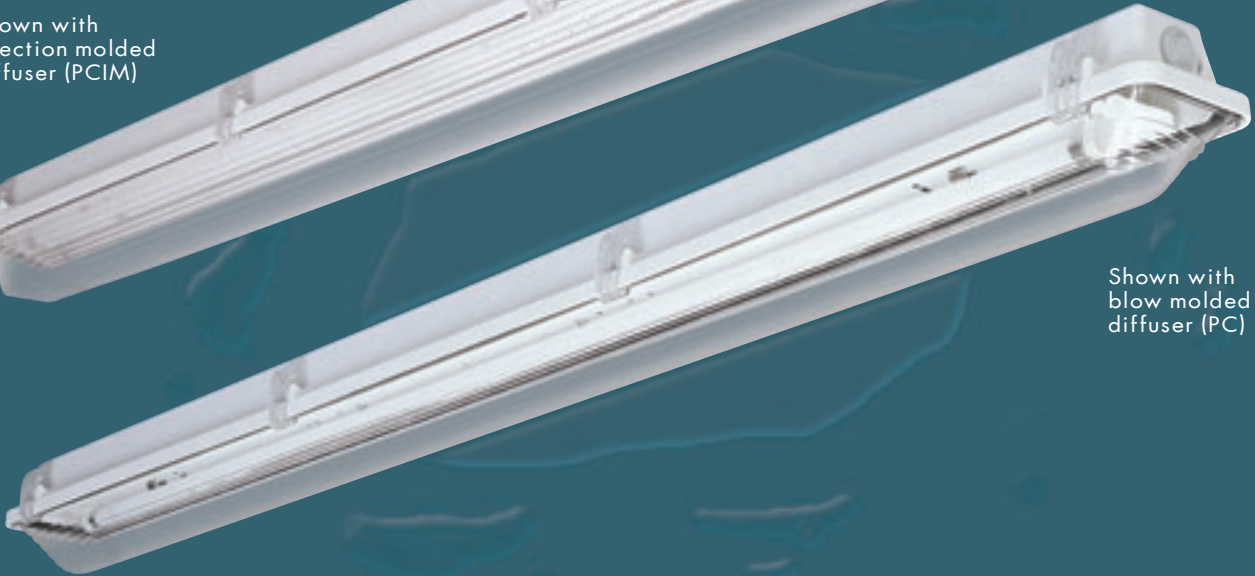
Enclosed & Gasketed T5

95

Shown with
injection molded
diffuser (PCIM)



Shown with
blow molded
diffuser (PC)



STYLISH AND COMPACT

Finally, an enclosed & gasketed fixture that combines form and function! The attractively styled Series 95 is just over 4" tall and available in 2', 4', or 5' lengths – making it an ideal choice for many different applications.

The 95 features a durable fiberglass housing with a poured & formed gasket to ensure a seal that won't be compromised by dust and moisture.

Specify the 95 with a low profile, blow molded diffuser, or a patterned, injection molded diffuser designed to minimize glare.



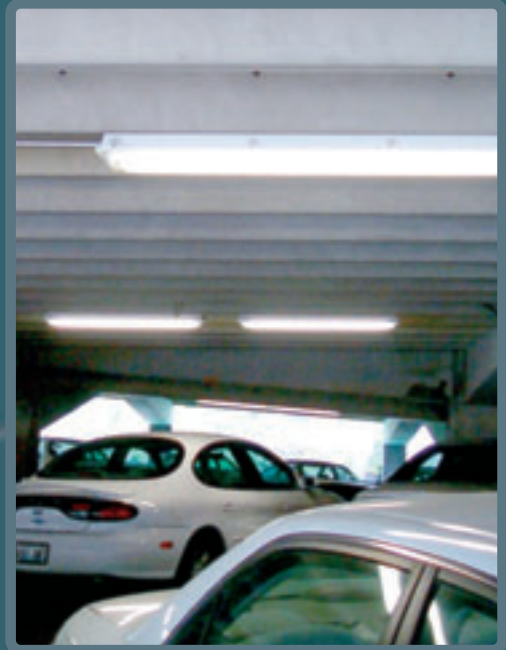
A Visible Difference

VARIETY OF APPLICATIONS

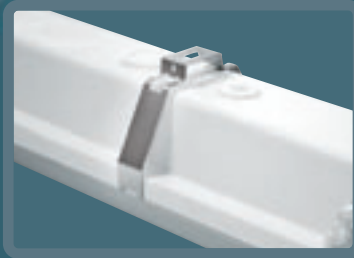
Polycarbonate diffusers and toggle latches are standard for maximum impact resistance – and UV stabilized for long life.

Series 95 is available with T5 or T5HO lamps for a choice of lumen packages. Optional UL wet location listing and various mounting options allow the 95 to be used in many different applications.

Typical uses of the 95 include parking garages, food processing and hose-down areas, exterior retail areas, car washes, manufacturing areas where dust and/or water is present, outdoor canopies, and boiler rooms/maintenance areas.



OPTIONS



SSMB

Stainless Steel Mounting Bracket

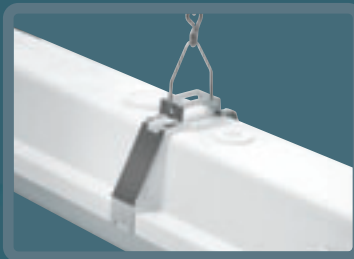
Brackets attach easily to most surfaces. Fixtures snap securely into the brackets, anywhere along length of housing. 2 brackets per fixture.



SS LATCH

Stainless Steel Latches

Captive, stainless steel latches withstand harsh conditions. Latches accommodate tamper-proof screws to secure the fixture. Screws not included.



SSCMB

Stainless Steel Chain Mounting Bracket

(2) brackets snap easily over the fixture housing for chain mounting. Brackets attach anywhere along length of fixture for simple adjustment. Chain sold separately.

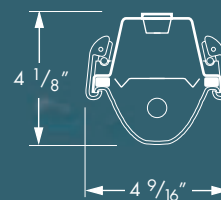


WET 1 / WET 2

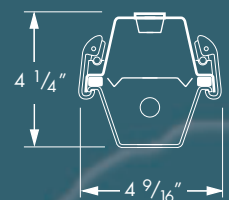
Wet Hub

Series 95 is UL listed for wet locations when ordered with water tight hubs factory installed. Available in one or both ends of fixture.

ORDERING INFO



Blow Molded Diffuser



Injection Molded Diffuser