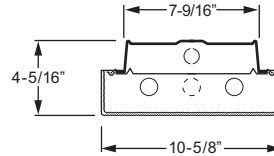
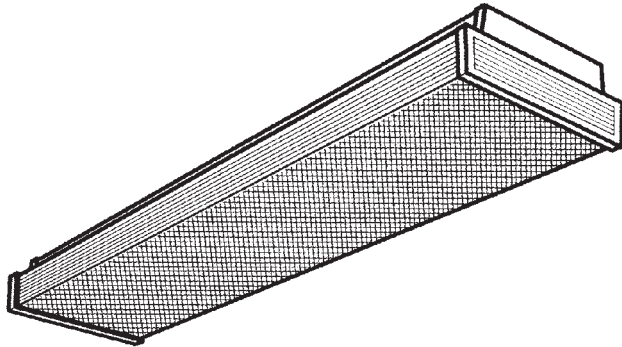


# 2 OR 3 LAMP INJECTION-MOLDED **WRAP AROUND**

SERIES **21**

JOB \_\_\_\_\_  
 TYPE \_\_\_\_\_  
 VOLTAGE \_\_\_\_\_



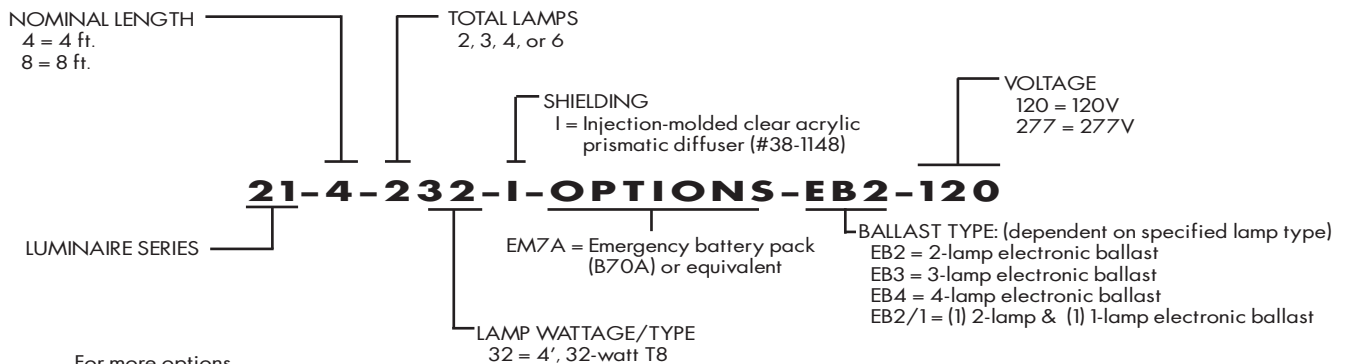
## SPECIFICATIONS

- HOUSING – 20-gauge die-formed C.R.S.
- SHIELDING – Injection-molded clear acrylic prismatic diffuser.
- FINISH – 92% minimum average reflective white powder coat with multi-stage iron/phosphate prepared metal.
- ELECTRICAL – Electronic ballast standard, instant start T8, rated Class P.
- LABELS – UL/CUL listed as fluorescent luminaire suitable for dry or damp locations.
- MOUNTING – Surface or suspended.

## FEATURES

- Fully-enclosed spring-loaded barrel latches secure diffuser.
- Injection-molded, opaque white end caps provide decorative appearance and ensure long-term diffuser stability.
- Individual or continuous row mounting.
- Wireway is accessible without the use of tools.
- Ballast secured by two captive bolts and nuts to ensure a tight, reliable fit for maximum heat dissipation and minimal ballast noise.
- All parts painted after fabrication to facilitate installation, increase efficiency, and inhibit corrosion.
- This fixture is proudly made in the USA.

## SUBMITTAL INFORMATION



For more options, accessories, and product details, refer to Information Section.



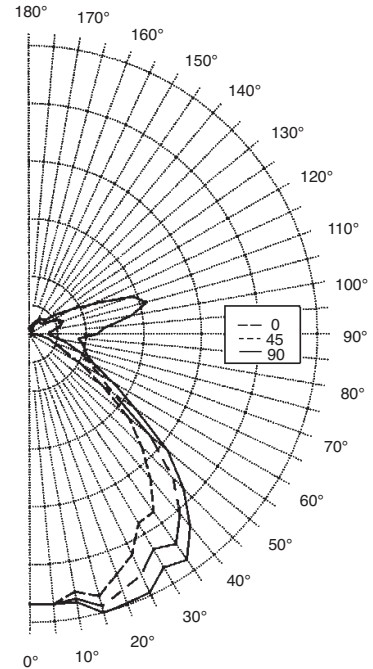
H.E. WILLIAMS, INC.

Williams Catalog #21-4-232-I-EB2-120  
 Test Report #7858.0, Dated 3/09/94

Lamp Type: F32T8/735/RS  
 Lamp Quantity: 2

**CANDLEPOWER DISTRIBUTION**

VERT. ANG.	HORIZONTAL ANGLE			ZONAL LUMENS
	0	45	90	
0	1351.	1351.	1351.	
5	1359.	1367.	1369.	130.3
15	1357.	1408.	1443.	398.2
25	1218.	1328.	1425.	614.5
35	1086.	1282.	1377.	788.3
45	800.	1020.	1094.	759.3
55	455.	517.	648.	501.0
65	185.	333.	364.	322.5
75	108.	214.	288.	220.6
85	33.	118.	249.	148.7
90	0.	95.	344.	
95	0.	102.	384.	165.0
105	9.	164.	613.	272.4
115	15.	169.	355.	173.5
125	19.	99.	178.	89.2
135	24.	78.	99.	51.8
145	33.	75.	97.	43.8
155	33.	50.	69.	23.3
165	39.	43.	51.	12.5
175	29.	29.	28.	2.8
28.	28.	28.	28.	



**LUMEN SUMMARY**

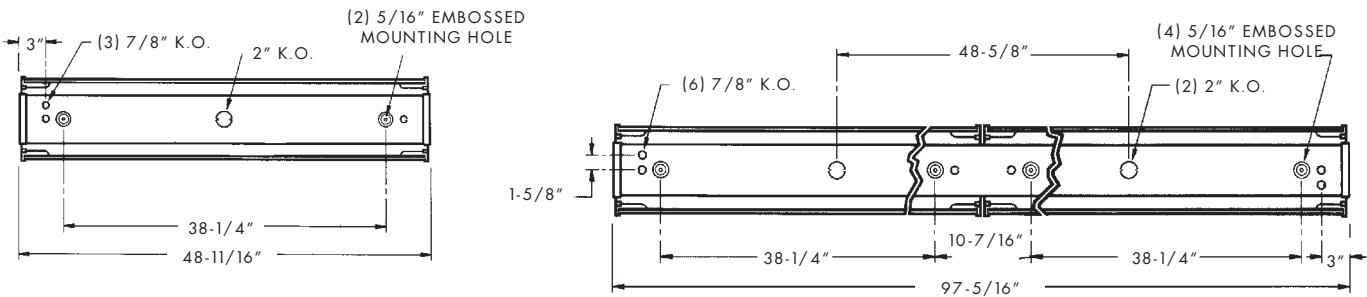
ZONE	LUMENS	% LAMP	% FIXTURE
0 - 30	1143.	20.1	24.2
0 - 40	1931.	33.9	40.9
0 - 60	3192.	56.0	67.7
0 - 90	3883.	68.1	82.3
90 - 120	611.	10.7	12.9
90 - 130	700.	12.3	14.8
90 - 150	796.	14.0	16.9
90 - 180	834.	14.6	17.7
Total Luminaire			
0-180	4718	82.8	100.0

**ZONAL CAVITY COEFFICIENTS**  
 EFFECTIVE FLOOR CAVITY REFL. = .20

CEILING	.80			.70			.50			
	WALL RCR	.70	.50	.30	.70	.50	.30	.50	.30	.10
0		.95	.95	.95	.91	.91	.91	.84	.84	.84
1		.87	.84	.80	.84	.80	.77	.74	.72	.70
2		.80	.74	.69	.77	.71	.66	.66	.62	.59
3		.74	.66	.60	.71	.64	.58	.59	.54	.51
4		.68	.59	.52	.65	.57	.51	.53	.48	.44
5		.62	.52	.46	.60	.51	.44	.47	.42	.38
6		.58	.47	.40	.55	.46	.39	.43	.37	.33
7		.53	.43	.36	.51	.41	.35	.39	.33	.29
8		.49	.38	.32	.47	.37	.31	.35	.29	.25
9		.45	.34	.28	.43	.33	.27	.31	.26	.22
10		.42	.31	.25	.40	.30	.24	.28	.23	.19

**TOTAL LUMINAIRE OPTICAL EFFICIENCY = 82.8 %**  
 SPACING CRITERIA: ACROSS= 1.5 ALONG= 1.2

**BACK VIEW**



H. E. WILLIAMS, INC.

H.E. Williams, Inc. • Carthage, Missouri • [www.hewilliams.com](http://www.hewilliams.com) • 417-358-4065 • Fax: 417-358-6015

Information contained herein is subject to change without notice.

HEWJP42827 09/02/11RJ