

**SUBMITTAL:**

**JOB:**

**TYPE:**

**VOLTAGE:**

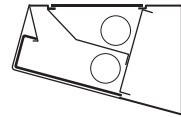
**EXAMPLE** → **29 - 4 - 2 32 - A - OPTIONS - EB2 - UNV**

SERIES      NOMINAL LENGTH      TOTAL WATTAGE/LAMPS TYPE      SHIELDING      OPTIONS      BALLAST TYPE      VOLTAGE

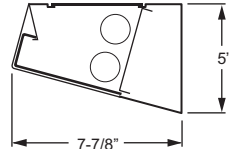


**FEATURES**

- ▶ Available with multi-level switching for up and/or down light.
- ▶ All-welded construction.
- ▶ Clear prismatic diffusers enclose both top and bottom lamps.
- ▶ Available in T8 or long twin tube lamps for design flexibility.
- ▶ Up to 80% optical efficiency.
- ▶ Versatile, durable fixture is ideal for many different applications.
- ▶ Ballast secured by two captive bolts and nuts to ensure a tight, reliable fit for maximum heat dissipation.
- ▶ Custom colors available.
- ▶ This fixture is proudly made in the USA.



Shown with DL



**SPECIFICATIONS**

**Housing** – 20-gauge, die-formed, welded C.R.S.

**Reflective Surfaces** – 92% minimum average reflective white polyester powder coat on interior steel components.

**Shielding** – Clear prismatic acrylic top and bottom lens. Bottom lens with 15% DR additive.

**Finish** – 92% minimum average reflective white polyester powder coat bonded to phosphate-free, multi-stage pretreated metal. All parts painted after fabrication to facilitate installation, increase efficiency, and inhibit corrosion.

**Electrical** – Electronic ballast standard, instant start T8, program start T5, rated Class P.

**Mounting** – Directly to wall.

**Labels** – UL/CUL listed as fluorescent luminaire suitable for dry or damp locations.

**ORDERING INFORMATION**

**SERIES**

29 Up/Down Wall Mount

**NOMINAL LENGTH**

2 2'  
3 3'  
4 4'

**TOTAL LAMPS**

1 or 2

**LAMP WATTAGE/TYPE**

**2' LAMP OPTIONS**

17 2', 17-watt T8  
40TT 2', 40-watt long twin tube

**3' LAMP OPTIONS**

25 3', 25-watt T8

**4' LAMP OPTIONS**

32 4', 32-watt T8

**SHIELDING**

A Acrylic

**OPTIONS**

For generic EM ballast options (must specify voltage), see Information section.

BLH Black housing  
NL13Q/EB1\*UNV Night light (13W)

**OPTIONS (Continued)**

CT Closed top (down light only)  
PS Pull switch, single circuit (120V only)  
DL-PS Divided lamp compartment (2-lamp unit with single-circuit pull switch operating downlight. Uplight is operated via wall switch—120V only, requires EB1/1.)  
DL-PS2 Divided lamp compartment (2-lamp unit with 2-circuit internal, 4-position pull switch operating both lamps—120V only, requires EB1/1)  
GCO Grounded convenience outlet (120V only)  
GFCO Ground fault convenience outlet (120V only)

**BALLAST TYPE**

EB1 1-lamp electronic ballast  
EB2 2-lamp electronic ballast  
EB1/1 (2) 1-lamp electronic ballasts

**VOLTAGE**

120 120V  
277 277V  
UNV 120-277V  
347 347V

### TEST REPORT INFORMATION

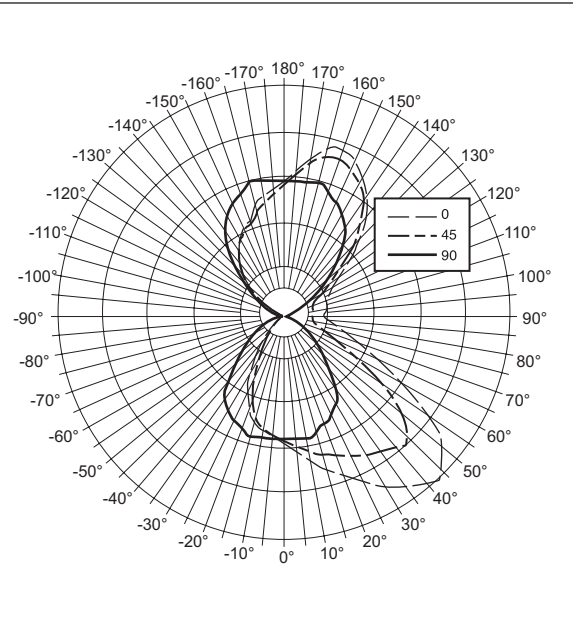
- ▶ Test Report #: 8361.0
- ▶ Date: 07/17/95
- ▶ Lamp Type: F32T8/735
- ▶ Lamp Quantity: 2

### PHOTOMETRY INFORMATION

Catalog #: 29-4-232-A

#### CANDLEPOWER DISTRIBUTION

Vertical Angle	Horizontal Angle					Zonal Lumens
	0°	45°	90°	135°	180°	
0°	764.	764.	764.	764.	764.	
5°	803.	786.	761.	742.	728.	72.9
15°	959.	893.	778.	684.	645.	223.6
25°	1097.	941.	708.	500.	385.	333.3
35°	1275.	1026.	620.	288.	210.	414.6
45°	1408.	1111.	399.	120.	110.	459.6
55°	1207.	851.	243.	54.	48.	395.9
65°	709.	427.	145.	38.	17.	246.7
75°	456.	238.	57.	0.	0.	136.2
85°	301.	179.	15.	0.	0.	97.1
90°	249.	179.	0.	0.	0.	
95°	265.	201.	10.	29.	31.	114.3
105°	286.	196.	76.	67.	79.	137.5
115°	307.	201.	140.	99.	124.	166.5
125°	416.	357.	271.	219.	227.	264.0
135°	644.	600.	455.	363.	372.	367.9
145°	887.	845.	658.	519.	511.	425.4
155°	1046.	999.	776.	603.	589.	371.7
165°	1096.	1040.	862.	728.	681.	249.6
175°	929.	903.	835.	787.	764.	80.5
180°	838.	838.	838.	838.	838.	



#### LUMEN SUMMARY

Zone	Lumens	% Lamp	% Fixture
0 - 30	648.	11.0	13.8
0 - 40	1078.	18.3	22.9
0 - 60	1950.	33.0	41.5
0 - 90	2457.	41.7	52.3
90 - 120	434.	7.4	9.2
90 - 130	709.	12.0	15.1
90 - 150	1526.	25.9	32.5
90 - 180	2245.	38.0	47.7
<b>Total Luminaire:</b>			
0 - 180	4702.	79.7	100.0

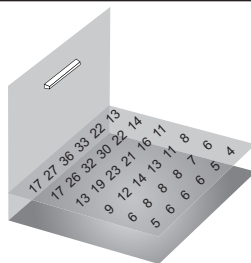
Total Luminaire Optical Efficiency: **79.7%**

#### ZONAL CAVITY COEFFICIENTS

	Ceiling	.80			.70			.50		
	Wall	.70	.50	.30	.70	.50	.30	.50	.30	.10
Room Cavity Ratio	0	.86	.86	.86	.80	.80	.80	.68	.68	.68
	1	.79	.75	.72	.73	.70	.67	.59	.57	.55
	2	.72	.66	.61	.66	.61	.57	.52	.49	.46
	3	.66	.58	.52	.61	.54	.49	.46	.42	.39
	4	.60	.51	.45	.55	.48	.42	.41	.37	.34
	5	.55	.46	.39	.51	.42	.37	.37	.32	.29
	6	.50	.41	.34	.47	.38	.32	.33	.28	.25
	7	.46	.37	.30	.43	.34	.28	.29	.25	.22
	8	.43	.33	.27	.40	.31	.25	.26	.22	.19
	9	.40	.30	.24	.36	.28	.22	.24	.19	.16
10	.37	.27	.21	.34	.25	.20	.22	.17	.14	

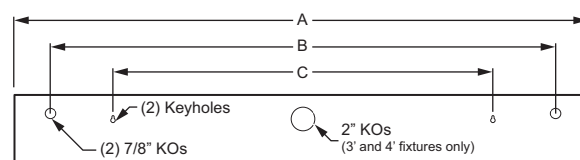
Effective Floor Cavity Reflectance = .20

#### FOOTCANDLE ESTIMATOR



Footcandle calculations based on standard reflectance of 80/50/20 and a light loss factor of .85. Fixture installed at 8' mounting height in 12' x 12' room with 10'-0" ceiling. Values shown are at 36" work surface height.

#### BACKVIEW



	A	B	C
2' Unit	24-5/8" O.C.	19" O.C.	16" O.C.
3' Unit	36-5/8" O.C.	29" O.C.	32" O.C.
4' Unit	48-5/8" O.C.	42-1/2" O.C.	32" O.C.

