

VANDAL-RESISTANT LUMINAIRE

91

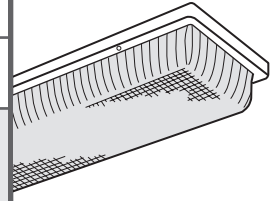
SUBMITTAL:

T5 | T8

JOB:

TYPE:

VOLTAGE:



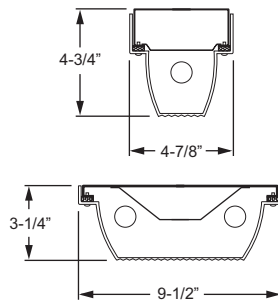
EXAMPLE → **91** - **4** - **2 32** - **OPTIONS** - **EB2** - **UNV**

SERIES NOMINAL LENGTH TOTAL WATTAGE/LAMPS TYPE OPTIONS BALLAST TYPE VOLTAGE



FEATURES

- ▶ UV stabilized polycarbonate diffuser for many years of trouble free operation.
- ▶ Closed-cell gasketing between housing and diffuser ensures tight, reliable fit.
- ▶ Injection-molded, UV stabilized diffuser completely encloses external housing for attractive appearance and vandal resistance.
- ▶ Tamper-resistant screws (holt head #8-32) standard to deter unauthorized entry into fixture. (Tamper-resistant tool must be ordered separately.)
- ▶ This fixture is proudly made in the USA.



SPECIFICATIONS

Housing – 22-gauge die-formed C.R.S.
Reflective Surfaces – 92% minimum average reflective white polyester powder coated finish.
Shielding – Vandal-resistant, UV stabilized polycarbonate, .177" thick.
Finish – 92% minimum average reflective white polyester powder coat bonded to phosphate-free, multi-stage pretreated metal. All parts painted after fabrication to facilitate installation, increase efficiency, and inhibit corrosion.
Electrical – Electronic ballast standard, instant start T8, program start T5, rated Class P.
Mounting – Surface.
Labels – UL/CUL listed as fluorescent luminaire suitable for dry or damp locations.

ORDERING INFORMATION

SERIES

91 Vandal-Resistant Luminaire

NOMINAL LENGTH

2 2' (2-lamp only)
4 4'

TOTAL LAMPS

1 (4' fixture only)
2

LAMP WATTAGE/TYPE

17 2', 17-watt T8
32 4', 32-watt T8
54T5H 4', 54-watt T5HO

OPTIONS

For generic EM ballast options (must specify voltage), see Fluorescent Information section.

16GA 16-gauge C.R.S. housing

BALLAST TYPE

EB1 1-lamp electronic ballast
EB2 2-lamp electronic ballast

VOLTAGE

120 120V
277 277V
UNV 120-277V
347 347V

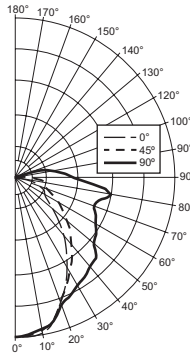
NOTE: This fixture requires a tamper-resistant tool (must be ordered separately). Please specify quantity required per project.

PHOTOMETRY

Catalog #: **91-4-232-EB2**

TEST REPORT INFORMATION

- ▶ Test Report #: 8744.0
- ▶ Date: 03/25/96
- ▶ Lamp Type: F32T8/SPX35/RS
- ▶ Lamp Quantity: 2



LUMEN SUMMARY

Zone	Lumens	% Lamp	% Fixture
0 - 30	883.	15.0	24.5
0 - 40	1374.	23.3	38.1
0 - 60	2286.	38.7	63.4
0 - 90	3286.	55.4	90.7
90 - 120	287.	4.9	8.0
90 - 130	308.	5.2	8.6
90 - 150	328.	5.6	9.1
90 - 180	336.	5.7	9.3
Total Luminaire:			
0 - 180	3604.	61.1	100.0

Total Luminaire Optical Efficiency: **61.1%**
IES Spacing Criteria: Across = 1.2, Along = 1.0

CANDLEPOWER DISTRIBUTION

Vertical Angle	Horizontal Angle			Zonal Lumens
	0°	45°	90°	
0°	1246.	1246.	1246.	
5°	1251.	1236.	1228.	118.1
15°	1151.	1142.	1158.	325.5
25°	914.	933.	1011.	439.2
35°	680.	755.	940.	491.1
45°	456.	595.	878.	485.2
55°	289.	442.	763.	426.6
65°	242.	318.	687.	372.9
75°	157.	224.	673.	324.5
85°	49.	205.	620.	285.2
90°	12.	141.	457.	
95°	12.	107.	387.	161.9
105°	12.	54.	240.	91.2
115°	10.	26.	84.	34.2
125°	8.	21.	47.	21.0
135°	8.	12.	28.	11.8
145°	8.	12.	17.	7.8
155°	8.	12.	14.	5.4
165°	8.	10.	12.	2.8
175°	0.	0.	0.	0
180°	0.	0.	0.	

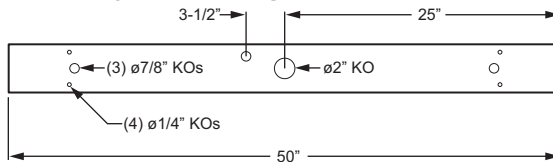
ZONAL CAVITY COEFFICIENTS

Room Cavity Ratio	Ceiling			Wall			Floor		
	.70	.50	.30	.70	.50	.30	.50	.30	.10
0	.71	.71	.71	.69	.69	.69	.65	.65	.65
1	.64	.61	.58	.62	.59	.56	.55	.53	.51
2	.58	.53	.48	.56	.51	.47	.48	.44	.42
3	.53	.47	.41	.51	.45	.40	.42	.38	.35
4	.49	.41	.36	.47	.40	.35	.38	.34	.30
5	.45	.37	.31	.43	.36	.30	.34	.29	.26
6	.41	.33	.28	.40	.32	.27	.30	.26	.23
7	.38	.30	.24	.37	.29	.24	.28	.23	.20
8	.35	.27	.22	.34	.26	.21	.25	.21	.17
9	.33	.24	.19	.31	.24	.19	.23	.18	.15
10	.30	.22	.17	.29	.22	.17	.21	.16	.14

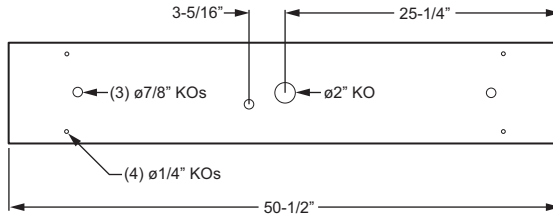
Effective Floor Cavity Reflectance = .20

FIXTURE DETAILS

1-LAMP BACK VIEW – 4' LENGTH



2-LAMP BACK VIEW – 4' LENGTH



2-LAMP BACK VIEW – 2' LENGTH

