

# ICETRON™ 13" ROUND INDUCTION DOWNLIGHT

# ICE13

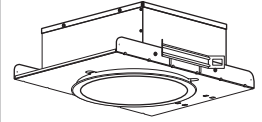
**SUBMITTAL:**

**INDUCTION**

**JOB:**

**TYPE:**

**VOLTAGE:**



EXAMPLE

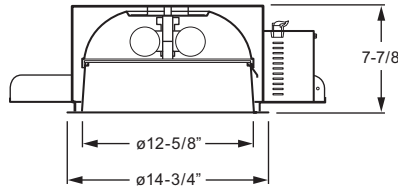
**ICE13 - 100 - 35K - CS - OPTIONS - UNV**

SERIES      WATTAGE      COLOR TEMPERATURE      REFLECTOR FINISH      OPTIONS      VOLTAGE

## FEATURES

- ▶ 100,000 hour lamp life significantly reduces maintenance where re-lamping is inconvenient or expensive.
- ▶ Induction lamps provide excellent lumen maintenance—70% at 60,000 hours.
- ▶ Lamps are available in 3500K, 4100K, and 5000K color temperature.
- ▶ 80 CRI (color rendering index).
- ▶ 100W and 150W systems operate in ambient temperatures as low as -40°C/-40°F (-25°C/-13°F for 70W systems).<sup>1</sup>
- ▶ Instant-on/instant re-strike.
- ▶ Self-flanged aluminum reflector prevents light leaks and is available in assorted colors.
- ▶ Efficient two-piece upper reflector assembly.
- ▶ Die-formed steel lamp enclosure with adjacent aluminum ballast housing allows both top and bottom access.
- ▶ Sturdy one-piece pan construction.
- ▶ Adjustable hanger brackets with bar hangers standard.
- ▶ This fixture is proudly made in the USA.

<sup>1</sup> Data is lamp-specific. Ambient temperature ratings vary with lamp and voltage—consult factory. Extremely low temperatures may result in reduced light output.



## SPECIFICATIONS

**Housing** – 20-gauge die-formed galvanized steel pan/plaster frame.  
**Housing Finish** – Highly reflective white polyester powder coat bonded to phosphate-free, multi-stage pretreated metal.  
**Reflector** – Low-iridescent aluminum. Clear semi-specular (CS) finish standard.  
**Electrical** – Electronic 120-277V ballast standard. Thermally protected. Prewired at factory for easy field installation.  
**Mounting** – Recessed. Pan size: 17" x 23"  
 Ceiling cutout: ø13-3/4"  
**Labels** – UL/CUL listed for through-branch circuit wiring and dry or damp locations. UL/CUL listed for wet location under covered ceiling when specified with C73 or C73-CCL option.

## ORDERING INFORMATION

### SERIES

**ICE13** ICETRON™ 13" Round Induction Downlight

### LAMP WATTAGE

**70** 70-watt  
**100** 100-watt  
**150S** 150-watt (150S system consists of an ICETRON 100/2P/ECO lamp and a QT 1x150 ICE/UNV-T ballast.)

### COLOR TEMPERATURE

**35K** 3500K  
**41K** 4100K  
**50K** 5000K

### REFLECTOR FINISH

**CS** Clear semi-specular (standard)  
**SPC** Clear specular  
**CG** Champagne gold  
**GD** Gold  
**PW** Pewter  
**SG** Satin-glow  
**STR** Straw  
**WT** Wheat

### OPTIONS

**F** Fuse (must specify voltage)  
**MWT** Matte white trim  
**CCL<sup>2</sup>** Cone with 4-cell parabolic louver<sup>2</sup>  
**C73** Clear prismatic tempered glass lens  
**C73-CCL<sup>2</sup>** C73 lens with cone and cross louver<sup>2</sup>

### VOLTAGE

**UNV** 120-277V

<sup>2</sup> Not available in clear specular (CS) finish.



## INDUCTION

## PHOTOMETRY INFORMATION

Catalog #: ICE13-100/12-CCL

### TEST REPORT INFORMATION

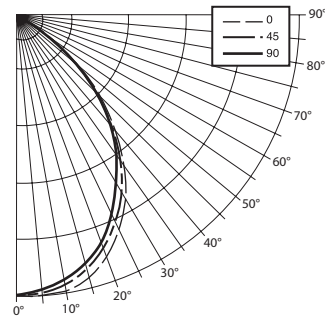
- ▶ Test Report #: 10620.0
- ▶ Date: 03/10/00
- ▶ Lamp Type: ICETRON 100/QT100
- ▶ Lamp Quantity: 1
- ▶ Rated Lumens: 8000.

### DESCRIPTION

- ▶ 1/100W ICETRON Induction Lamp
- ▶ 13" Round Recessed Luminaire with Specular Reflector
- ▶ 3.5" Deep Specular Cone and Semi-Specular Cross Baffle
- ▶ Sylvania Ballast #QT 1x100/1220-240-ICE

### CANDLEPOWER DISTRIBUTION

Vertical Angle	Horizontal Angle			Zonal Lumens
	0°	45°	90°	
0°	2425.	2425.	2425.	
5°	2441.	2416.	2392.	229.0
15°	2361.	2292.	2261.	649.6
25°	2063.	2000.	1921.	926.2
35°	1586.	1564.	1497.	996.1
45°	958.	999.	1011.	789.3
55°	336.	369.	370.	306.4
65°	37.	30.	27.	28.3
75°	5.	5.	5.	5.3
85°	0.	0.	0.	.0
90°	0.	0.	0.	



### LUMEN SUMMARY

Zone	Lumens	% Lamp	% Fixture
0 - 30	1805.	22.6	45.9
0 - 40	2801.	35.0	71.3
0 - 60	3897.	48.7	99.1
0 - 90	3930.	49.1	100.0
<b>Total Luminaire:</b>			
0 - 180	3930.	49.1	100.0
IES Spacing Criteria: End = 1.1 Diagonal = 1.1 Across = 1.1			

### ZONAL CAVITY COEFFICIENTS

Room Cavity Ratio	Ceiling	.80			.70			.50		
	Wall	.70	.50	.30	.70	.50	.30	.50	.30	.10
	0	.58	.58	.58	.57	.57	.57	.55	.55	.55
1	.55	.54	.53	.54	.53	.52	.51	.50	.49	
2	.52	.50	.47	.51	.49	.47	.47	.45	.44	
3	.49	.46	.43	.48	.45	.42	.44	.41	.40	
4	.46	.42	.39	.45	.41	.38	.40	.38	.36	
5	.43	.38	.35	.42	.38	.35	.37	.34	.32	
6	.40	.35	.32	.39	.35	.32	.34	.31	.29	
7	.37	.32	.29	.37	.32	.28	.31	.28	.26	
8	.35	.29	.26	.34	.29	.26	.28	.25	.23	
9	.32	.26	.23	.32	.26	.23	.26	.23	.20	
10	.30	.24	.21	.29	.24	.21	.23	.20	.18	

Effective Floor Cavity Reflectance = .20

### QUANTITY ESTIMATOR

Room Size	±50 fc.	±75 fc.	±100 fc.
20' x 20' (400 sq. ft.)	6	9	12
50' x 50' (2,500 sq. ft.)	12	16	25
100' x 100' (10,000 sq. ft.)	20	30	42

Calculations based on standard reflectance of 80/50/20 and a light loss factor of 1.0 with a 10'-0" ceiling height.

### COLOR CONVERSION FACTORS

Catalog Number	Description	Conversion Factor
<b>SPC</b>	Specular	1.02
<b>CG</b>	Champagne gold	.96
<b>GD</b>	Gold	.93
<b>PW</b>	Pewter	.86
<b>STR</b>	Straw	.97
<b>WT</b>	Wheat	.88