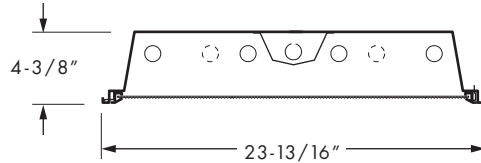
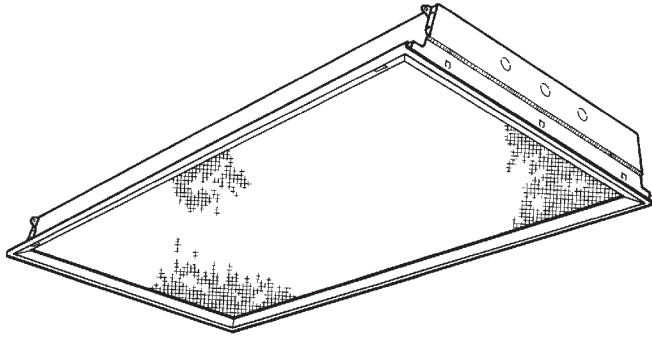


2' x 4' IC RATED TROFFER

SERIES **50**
IC Rated

VOLTAGE TYPE JOB _____



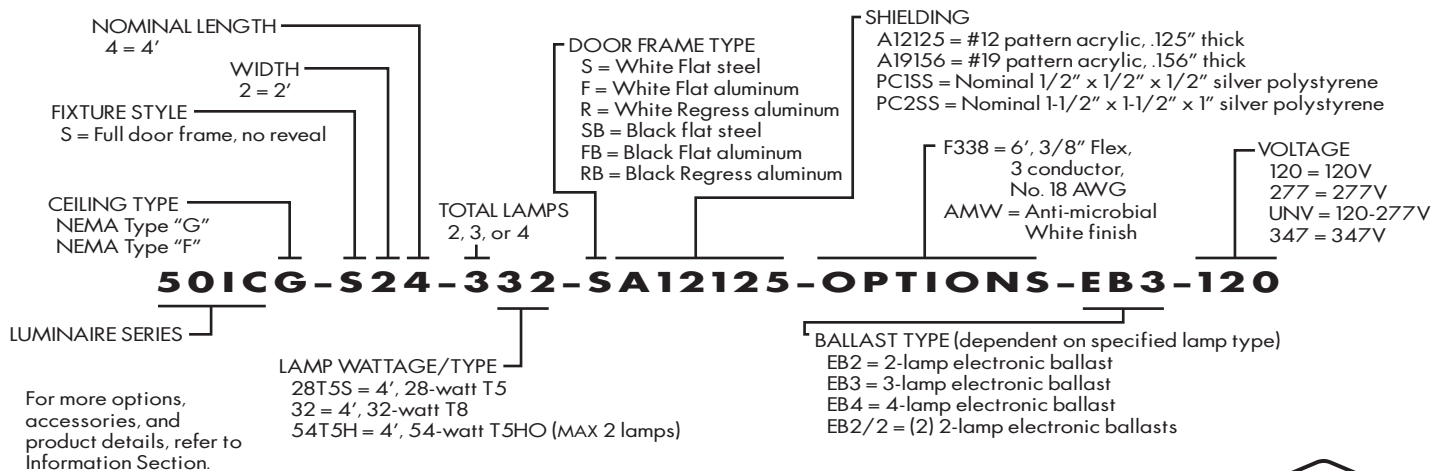
SPECIFICATIONS

- HOUSING – 22-gauge die-formed C.R.S.
- DOOR FRAME – 20-gauge C.R.S. or .050" extruded aluminum, flat or regress, with mitered corners. T-slot steel hinge allows reversible hinging and latching.
- SHIELDING – #12 pattern, .125" acrylic overlay standard—other patterns and thicknesses available.
- FINISH – 92% minimum average reflective white powder coat with multi-stage iron/phosphate prepared metal.
- ELECTRICAL – Electronic ballast standard, either instant start or programmed start, rated Class P.
- LABELS – UL/CUL listed as recessed fluorescent luminaire suitable for dry or damp locations. Type IC-rated for direct contact with insulation.
- MOUNTING – NEMA Type "G" standard. NEMA Type "F" available.

FEATURES

- Thermally protected for use in direct contact with insulation.
- Fully-enclosed spring-loaded cam latches allow years of hassle-free maintenance.
- T-slot steel hinge ensures positive retention when door is opened.
- 4-3/8" deep housing eliminates lens shadowing.
- Deep reinforcement ribs provide added strength.
- Rolled-edge channel adds superior strength.
- Optional anti-microbial powder coating available to prevent the spread of dangerous micro-organisms and suppress the growth of mold and bacteria.
- Integral T-bar clips quickly secure fixture to structure.
- Field convertible to NEMA Type "F".
- Fully gasketed door minimizes contaminants.
- All parts painted after fabrication to facilitate installation, increase efficiency, and inhibit corrosion.
- This fixture is proudly made in the USA.

SUBMITTAL INFORMATION



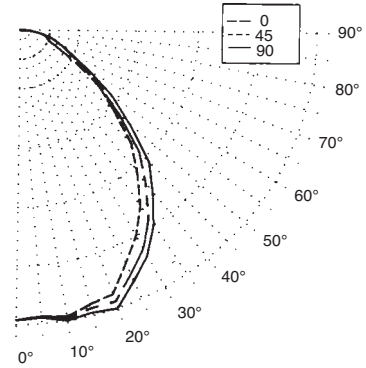
FLUORESCENT LIGHTING

Williams Catalog #50G-S24-332-SA12125-EB3-120
 Test Report #8417.0, Dated 08/18/95

Lamp Type: F32T8/735/RS
 Lamp Quantity: 3

CANDLEPOWER DISTRIBUTION

VERT. ANG.	HORIZONTAL ANGLE			ZONAL LUMENS
	0	45	90	
0	2809.	2809.	2809.	
5	2781.	2778.	2789.	265.6
15	2740.	2780.	2820.	788.4
25	2478.	2589.	2665.	1194.5
35	2055.	2198.	2282.	1372.1
45	1527.	1643.	1775.	1275.1
55	935.	956.	1083.	889.3
65	537.	405.	556.	466.7
75	328.	263.	338.	301.8
85	119.	119.	130.	133.5
90	0.	0.	0.	



LUMEN SUMMARY

ZONE	LUMENS	% LAMP	% FIXTURE
0 - 30	2248.	26.3	33.6
0 - 40	3621.	42.3	54.1
0 - 60	5785.	67.7	86.5
0 - 90	6687.	78.2	100.0
90 - 120	0.	0.	0.
90 - 130	0.	0.	0.
90 - 150	0.	0.	0.
90 - 180	0.	0.	0.
Total Luminaire			
0-180	6687.	78.2	100.0

ZONAL CAVITY COEFFICIENTS

EFFECTIVE FLOOR CAVITY REFL. = .20

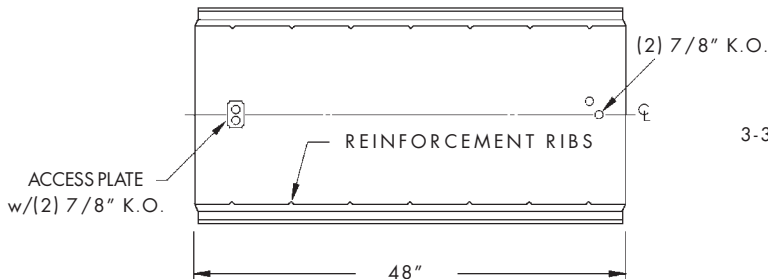
CEILING WALL RCR	.80			.70			.50		
	.70	.50	.30	.70	.50	.30	.50	.30	.10
0	.93	.93	.93	.91	.91	.91	.87	.87	.87
1	.86	.83	.80	.84	.81	.79	.78	.76	.74
2	.80	.74	.70	.78	.73	.69	.70	.67	.64
3	.74	.67	.61	.72	.66	.61	.64	.59	.56
4	.68	.60	.54	.67	.59	.54	.57	.52	.49
5	.63	.54	.48	.62	.53	.47	.52	.46	.42
6	.58	.49	.42	.57	.48	.42	.47	.41	.37
7	.54	.44	.38	.53	.44	.37	.42	.37	.33
8	.50	.40	.33	.49	.39	.33	.38	.33	.29
9	.46	.36	.30	.45	.35	.29	.34	.29	.25
10	.43	.33	.27	.42	.32	.26	.31	.26	.22

TOTAL LUMINAIRE

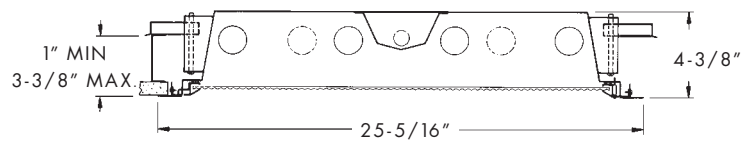
OPTICAL EFFICIENCY = 78.2 %

SPACING CRITERIA: ACROSS= 1.3 ALONG= 1.2

BACK VIEW



CROSS SECTION NEMA TYPE "F" INSTALLATION



MAXIMUM RECOMMENDED CEILING OPENING IS 24-3/8" X 48-3/8"

For continuous row mounting, add 49-5/16" for each additional fixture to obtain ceiling opening. 1-5/16" between end plates.



H. E. WILLIAMS, INC.