

# CORNER LIGHT

# CL

**SUBMITTAL:**

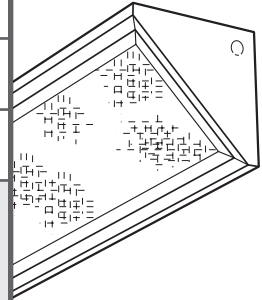
**JOB:**

**TYPE:**

**VOLTAGE:**

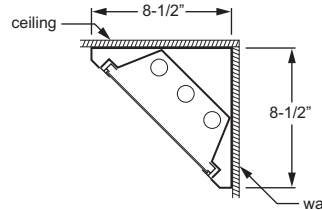
**EXAMPLE** → **CL - 4 - 3 32 - F A12125 - OPTIONS - EB3 - UNV**

SERIES      NOMINAL LENGTH      TOTAL WATTAGE/ LAMPS      TYPE      DOOR FRAME      SHIELDING      OPTIONS/ ACCESSORIES      BALLAST TYPE      VOLTAGE



## FEATURES

- ▶ Wall or ceiling mount adds versatility.
- ▶ Available with T5 or T8 lamps for design flexibility.
- ▶ Optional anti-microbial powder coating available to prevent the spread of dangerous micro-organisms and suppress the growth of mold and bacteria.
- ▶ Welded end plates for crisp, clean appearance.
- ▶ Fully enclosed spring-loaded cam latches.
- ▶ This fixture is proudly made in the USA.



## SPECIFICATIONS

**Housing** – 20-gauge die-formed C.R.S.  
**Reflective Surfaces** – 92% minimum average reflective white polyester powder coat on interior components.  
**Shielding** – Patterned acrylic, .125" or .156" thick.  
**Finish** – 92% minimum average reflective white polyester powder coat bonded to phosphate-free, multi-stage pretreated metal. All parts painted after fabrication to facilitate installation, increase efficiency, and inhibit corrosion.  
**Electrical** – Electronic ballast standard, instant start T8, program start T5, rated Class P.  
**Mounting** – Wall or ceiling mount.  
**Labels** – UL/CUL listed as fluorescent luminaire suitable for dry or damp locations.

## ORDERING INFORMATION

### SERIES

**CL** Corner Light

### NOMINAL LENGTH

**4** 4'

### TOTAL LAMPS

**1, 2, or 3**

### LAMP WATTAGE/TYPE

**28T5S** 4', 28-watt T5  
**32** 4', 32-watt T8  
**54T5H** 4', 54-watt T5HO

### DOOR FRAME

**F** White flat aluminum  
**R** White regress aluminum  
**FB** Black flat aluminum  
**RB** Black regress aluminum

### SHIELDING

**A12125** Acrylic, pattern #12, .125" thick  
**A19156** Acrylic, pattern #19, .156" thick

### OPTIONS

For generic EM ballast options (must specify voltage), see Information section.

**AMW** Anti-microbial white finish  
**DG/MYLAR** Double gasket (flat aluminum door only)  
**TP<sup>1</sup>** Tamper-resistant screws<sup>1</sup>

### ACCESSORIES

**WG-CL-4** Wireguard, 14-gauge, white, 4'

### BALLAST TYPE

**EB1** 1-lamp electronic ballast  
**EB2** 2-lamp electronic ballast  
**EB3** 3-lamp electronic ballast  
**EB2/1** (1) 2-lamp and (1) 1-lamp electronic ballast

### VOLTAGE

**120** 120V  
**277** 277V  
**UNV** 120-277V  
**347** 347V

<sup>1</sup> This option requires a tamper-resistant tool (must be ordered separately). Please specify quantity required per project.

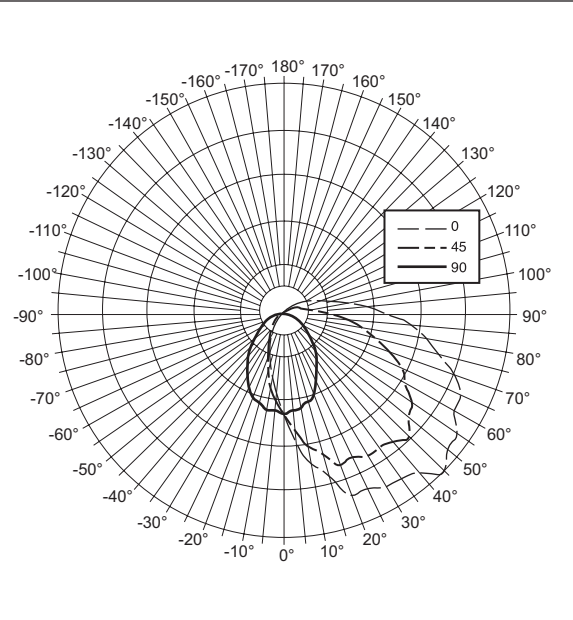
## TEST REPORT INFORMATION

- ▶ Test Report #: 13698.0
- ▶ Date: 10/25/07
- ▶ Lamp Type: F32T8/835
- ▶ Lamp Quantity: 3

## PHOTOMETRY INFORMATION

### CANDLEPOWER DISTRIBUTION

Vertical Angle	Horizontal Angle					Zonal Lumens
	0°	45°	90°	135°	180°	
0°	1365.	1365.	1365.	1365.	1365.	
5°	1696.	1570.	1325.	1155.	1049.	129.9
15°	2239.	1942.	1254.	759.	609.	382.1
25°	2627.	2174.	1073.	424.	375.	595.7
35°	2745.	2244.	817.	273.	198.	743.5
45°	3067.	2404.	594.	172.	28.	887.7
55°	2873.	2135.	374.	22.	0.	895.1
65°	2651.	1795.	260.	0.	0.	825.1
75°	2169.	1268.	178.	0.	0.	655.4
85°	1718.	844.	61.	0.	0.	477.9
90°	1388.	623.	0.	0.	0.	
95°	1161.	435.	0.	0.	0.	313.4
105°	651.	244.	0.	0.	0.	155.5
115°	402.	197.	0.	0.	0.	76.2
125°	241.	39.	0.	0.	0.	42.6
135°	42.	0.	0.	0.	0.	0.0
145°	0.	0.	0.	0.	0.	0.0
155°	0.	0.	0.	0.	0.	0.0
165°	0.	0.	0.	0.	0.	0.0
175°	0.	0.	0.	0.	0.	0.0
180°	0.	0.	0.	0.	0.	



### LUMEN SUMMARY

Zone	Lumens	% Lamp	% Fixture
0 - 30	1108.	12.5	17.9
0 - 40	1851.	20.9	30.0
0 - 60	3634.	41.1	58.8
0 - 90	5592.	63.2	90.5
90 - 120	545.	6.2	8.8
90 - 130	588.	6.6	9.5
90 - 150	588.	6.6	9.5
90 - 180	588.	6.6	9.5
<b>Total Luminaire:</b>			
0 - 180	6180.	69.8	100.0

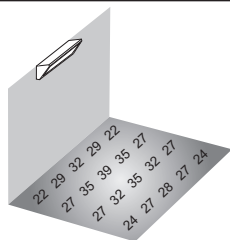
Total Luminaire Optical Efficiency: **69.8%**

### ZONAL CAVITY COEFFICIENTS

Room Cavity Ratio	Ceiling	.80			.70			.50		
	Wall	.70	.50	.30	.70	.50	.30	.50	.30	.10
0	.82	.82	.82	.79	.79	.79	.74	.74	.74	
1	.73	.69	.65	.70	.66	.63	.62	.59	.57	
2	.65	.59	.53	.63	.57	.52	.53	.49	.45	
3	.59	.51	.45	.57	.50	.44	.47	.42	.38	
4	.54	.45	.38	.52	.44	.37	.41	.36	.31	
5	.49	.39	.33	.47	.38	.32	.36	.30	.26	
6	.45	.35	.28	.43	.34	.28	.32	.26	.22	
7	.41	.31	.25	.40	.30	.24	.29	.23	.19	
8	.38	.28	.22	.36	.27	.21	.26	.20	.16	
9	.35	.25	.19	.33	.24	.18	.23	.18	.14	
10	.32	.23	.17	.31	.22	.17	.21	.16	.12	

Effective Floor Cavity Reflectance = .20

### FOOTCANDLE ESTIMATOR



Footcandle calculations based on standard reflectance of 80/50/20 and a light loss factor of .85. Fixture installed at 8' mounting height in 8' x 10' room.

### BACKVIEW

