

ARCHITECTURAL WALL MOUNT

WMA

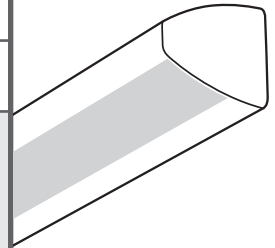
SUBMITTAL:

T5

JOB:

TYPE:

VOLTAGE:



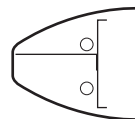
EXAMPLE

WMA - 4 - 2 54T5H - A - OPTIONS - EB2 - UNV

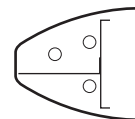
SERIES
NOMINAL LENGTH
TOTAL LAMPS
WATTAGE/TYPE
SHIELDING
OPTIONS
BALLAST TYPE
VOLTAGE

FEATURES

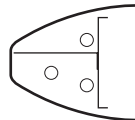
- ▶ Available in various uplight, downlight, closed-top, and divided lamp options.
- ▶ Pull switches and grounded convenience outlet options available (120V only).
- ▶ Various housing color options available, including optional anti-microbial powder coating available to prevent the spread of dangerous micro-organisms and suppress the growth of mold and bacteria.
- ▶ Tool-less access to lamps by removing front housing from fixture channel.
- ▶ Die-cast aluminum end caps.
- ▶ Keyhole mounting for easy installation.
- ▶ Tamper-resistant screws available.
- ▶ This fixture is proudly made in the USA.



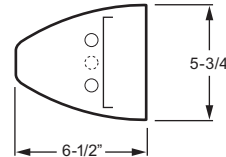
Shown with DL



Shown with DL2U



Shown with DL1U



SPECIFICATIONS

Housing – 20-gauge C.R.S. fixture channel. Front housing constructed of marine grade extruded aluminum with die-cast aluminum end caps.

Reflective Surfaces – 92% minimum average reflective white polyester powder coat on interior steel components.

Shielding – Acrylic, pattern #12, .125" thick.

Finish – Textured matte white polyester TGIC powder coat bonded to phosphate-free, multi-stage pretreated metal. All parts painted after fabrication to facilitate installation, increase efficiency, and inhibit corrosion.

Electrical – Electronic ballast standard, program start T5, rated Class P.

Mounting – Wall.

Labels – UL/CUL listed as fluorescent luminaire suitable for dry or damp locations.

ORDERING INFORMATION

SERIES

WMA T5 Architectural Wall Mount

NOMINAL LENGTH

2	2'	4	4'
3	3'		

TOTAL LAMPS

1, 2, or 3

LAMP WATTAGE/TYPE

2' LAMP OPTIONS

14T5S 2', 14-watt T5
24T5H 2', 24-watt T5HO

3' LAMP OPTIONS

21T5S 3', 21-watt T5
39T5H 3', 39-watt T5HO

4' LAMP OPTIONS

28T5S 4', 28-watt T5
54T5H 4', 54-watt T5HO

SHIELDING

A Acrylic, pattern #12, .125" thick

OPTIONS

For generic EM ballast options (must specify voltage), see Information section.

PSR¹ Single-circuit pull switch on right (120V only)¹
PS2R Two-circuit, 4-position pull switch on right (120V only; requires two ballasts per fixture)
PSL¹ Single-circuit pull switch on left (120V only)¹

OPTIONS (Continued)

PS2L Two-circuit, 4-position pull switch on left (120V only; requires two ballasts per fixture)
GCOL Grounded convenience outlet on left (120V only)
GCOR Grounded convenience outlet on right (120V only)
DL¹ Divided light with one lamp up, one lamp down (2-lamp fixture only, requires two ballasts, not available in 2' unit)¹
DL1U¹ Divided light with one lamp up (3-lamp fixture only, requires two ballasts, not available in 2' unit)¹
DL2U¹ Divided light with two lamps up (3-lamp fixture only, requires two ballasts; not available in 2' unit)¹
OCC ____² Factory-installed occupancy sensor must be specified as follows:
OCCWS FS-505-FS-PP ____²
CT Closed-top
TP³ Tamper-resistant (holt head) screws³
AMW Anti-microbial white finish

BALLAST TYPE

For complete ballast offering, see Information section.
EB1 1-lamp electronic ballast
EB2 2-lamp electronic ballast
EB3 3-lamp electronic ballast (54T5H lamps only)

VOLTAGE

120	120V	UNV	120-277V
277	277V	347	347V

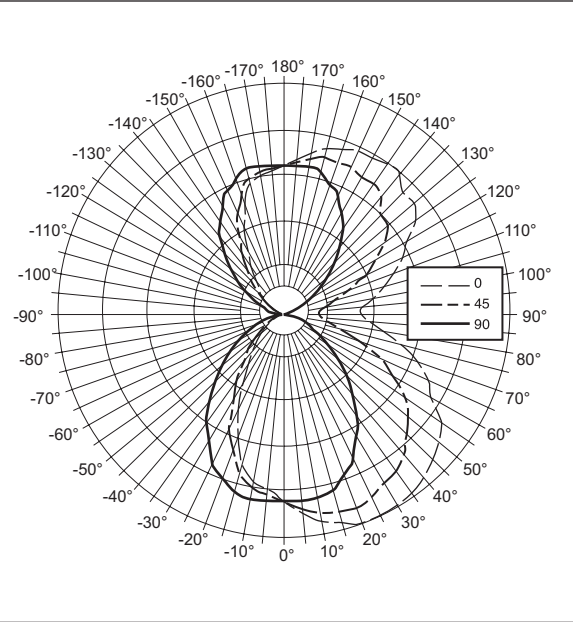
¹ When divided light unit is equipped with single-circuit pull switch (PSR or PSL), pull switch operates the down light.
² Factory-installed occupancy sensor available with 120V or 277V only, must specify.
³ This option requires a tamper-resistant tool (must be ordered separately). Please specify quantity required per project.

TEST REPORT INFORMATION

- ▶ Test Report #: 14045.0
- ▶ Date: 04/23/08
- ▶ Lamp Type: FP54T5HO/835
- ▶ Lamp Quantity: 2

CANDLEPOWER DISTRIBUTION

Vertical Angle	Horizontal Angle					Zonal Lumens
	0°	45°	90°	135°	180°	
0°	1304.	1304.	1304.	1304.	1304.	
5°	1391.	1364.	1309.	1267.	1234.	125.6
15°	1510.	1437.	1289.	1158.	1091.	367.6
25°	1566.	1436.	1151.	872.	735.	533.1
35°	1535.	1363.	921.	545.	397.	592.4
45°	1461.	1217.	661.	327.	252.	585.7
55°	1349.	1045.	422.	134.	105.	523.3
65°	1123.	762.	231.	67.	40.	405.2
75°	854.	444.	140.	17.	14.	266.3
85°	613.	278.	42.	18.	28.	186.8
90°	553.	260.	0.	27.	34.	
95°	565.	270.	18.	15.	31.	172.4
105°	738.	389.	104.	20.	14.	231.9
115°	925.	648.	183.	54.	40.	341.2
125°	1137.	879.	350.	113.	88.	440.7
135°	1200.	980.	544.	272.	219.	487.9
145°	1286.	1113.	758.	456.	330.	490.0
155°	1264.	1143.	934.	731.	609.	432.8
165°	1204.	1141.	1048.	962.	912.	297.9
175°	1087.	1071.	1048.	1023.	1005.	99.8
180°	1043.	1043.	1043.	1043.	1043.	



LUMEN SUMMARY

Zone	Lumens	% Lamp	% Fixture
0 - 30	1026.	10.3	15.6
0 - 40	1619.	16.2	24.6
0 - 60	2728.	27.3	41.4
0 - 90	3586.	35.9	54.5
90 - 120	746.	7.5	11.3
90 - 130	1186.	11.9	18.0
90 - 150	2164.	21.6	32.9
90 - 180	2995.	29.9	45.5
Total Luminaire:			
0 - 180	6581.	65.8	100.0

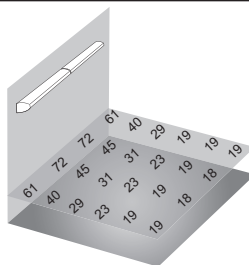
Total Luminaire Optical Efficiency: **65.8%**

ZONAL CAVITY COEFFICIENTS

	Ceiling	.80			.70			.50		
	Wall	.70	.50	.30	.70	.50	.30	.50	.30	.10
Room Cavity Ratio	0	.71	.71	.71	.66	.66	.66	.56	.56	.56
	1	.65	.62	.59	.60	.57	.55	.49	.47	.46
	2	.59	.54	.50	.55	.50	.47	.43	.40	.38
	3	.54	.48	.43	.50	.44	.40	.38	.35	.32
	4	.49	.42	.37	.46	.39	.35	.34	.31	.28
	5	.45	.38	.32	.42	.35	.30	.30	.27	.24
	6	.42	.34	.28	.39	.32	.27	.27	.24	.21
	7	.39	.30	.25	.36	.28	.24	.25	.21	.18
	8	.36	.27	.22	.33	.26	.21	.22	.19	.16
	9	.33	.25	.20	.30	.23	.19	.20	.16	.14
	10	.31	.23	.18	.28	.21	.17	.18	.15	.12

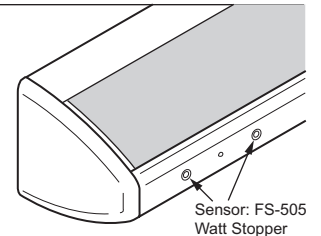
Effective Floor Cavity Reflectance = .20

FOOTCANDLE ESTIMATOR

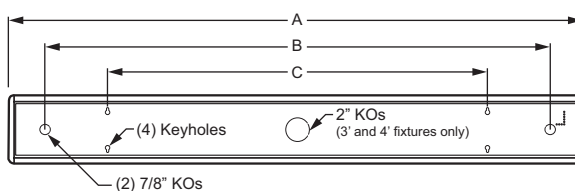


Footcandle calculations based on standard reflectance of 80/50/20 and a light loss factor of .85. Fixtures installed at 7.5' mounting height in 10' x 12' room with 9'-0" ceiling. Values shown are at 30" work surface height.

OCCUPANCY SENSOR DETAIL



BACKVIEW



	A	B	C
2' Unit	25-1/8" O.C.	20-1/2" O.C.	16" O.C.
3' Unit	37-1/8" O.C.	32-1/2" O.C.	32" O.C.
4' Unit	49-1/8" O.C.	42-1/2" O.C.	32" O.C.

