

DECORATIVE POST TOP LUMINAIRE

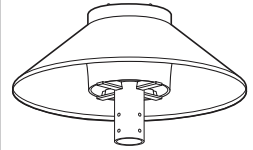
OFA28

SUBMITTAL:

JOB:

TYPE:

VOLTAGE:



EXAMPLE: OFA28 - 150HPS120 - DBR - OPTIONS

SERIES

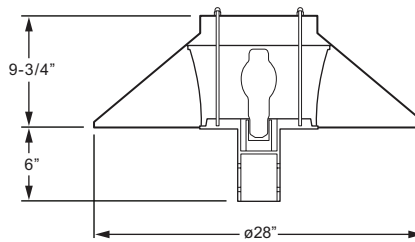
ELECTRICAL PACKAGE

FINISH OPTIONS

OPTIONS

SERIES

OFA28 — The OFA28 Series features the clean lines of the angled reflector hood for a simple solution to decorative outdoor Post Top lighting.



Total fixture EPA: .99/Weight: 16 Lbs.



OFA28 SERIES HOUSING

— A spun aluminum reflector hood, minimum .080" wall thickness, with fitter, lens and reflector assembly secured with four concealed support rods. Underside finish is highly-reflective, non-glare white polyester powder coat.

DIFFUSER

— Injection molded clear U.V. stabilized prismatic acrylic. Type V distribution.

ELECTRICAL PACKAGE (Must specify)

HIGH PRESSURE SODIUM

Lamp:	E17	E17	E17	E17
Socket:	E26 Medium	E26 Medium	E26 Medium	E26 Medium
ANSI Ballast Code:	S68	S62	S54	S55
	50HPS120	70HPS120	100HPS120	150HPS120
		70HPS208	100HPS208	
		70HPS240	100HPS240	
		70HPS277	100HPS277	

ELECTRICAL PACKAGE

Porcelain socket. Prewired at factory for easy field installation. Postline ballast, rated -40°F minimum starting temperature. HX-HPF or CWA ballast type standard. Lamp is optional, please specify when ordering.

FINISH OPTIONS (Must specify)

BLK	Black (RAL# 9004)	DBR	Dark bronze (Protech #PC21462)
GRAY	Standard gray (Protech #PC18367)	GRN	Green (RAL# 6005)
SLV	Satin aluminum (RAL# 9006)	WHT	White (RAL# 9003)
RAL#_____	Specify custom color		

FINISH OPTIONS

Super durable polyester powder coat meets and exceeds AAMA 2604 specifications for outdoor durability.

OPTIONS

SF	Single fuse (120V, 277V, or 347V only, must specify voltage)
DF	Double fuse (208V, 240V, or 480V only, must specify voltage)

MOUNTING

Post top mounting on 2-7/8" O.D. removable tenon only. Minimum 4" pole to accommodate postline ballast. See Williams' Poles or Pole Top Assemblies for details.

DISTRIBUTION



Type V

LABELS

cCSAus certified as luminaire suitable for wet location.

