

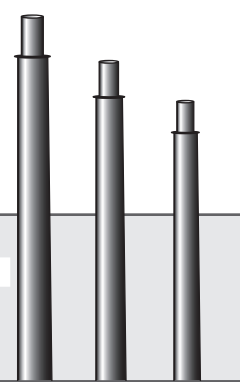
# ROUND TAPERED STEEL POLE

# RTS

**SUBMITTAL:**

**JOB:**

**TYPE:**



**EXAMPLE:** **VM - RTS - 200 - 0590 - 11 - T238 - DBR - AB - OPTIONS**

PREFIX      SERIES      HEIGHT      SHAFT BASE DIAMETER      WALL THICKNESS      FIXTURE MOUNTING      FINISH OPTIONS      ANCHOR BOLTS      OPTIONS

## SERIES

**RTS** — The RTS Series round tapered steel pole is designed for 2-3/8" tenon mount standard and features one-piece construction in heights up to 50'.

### HEIGHT\* (Must specify)

<b>200<sup>1</sup></b>	20'-0" <sup>1</sup>
<b>250</b>	25'-0"
<b>300</b>	30'-0"
<b>350<sup>1</sup></b>	35'-0" <sup>1</sup>
<b>390</b>	39'-0"
<b>450</b>	45'-0"
<b>500</b>	50'-0"

<sup>1</sup> 11-gauge only.

### SHAFT BASE DIAMETER\* (Must specify)

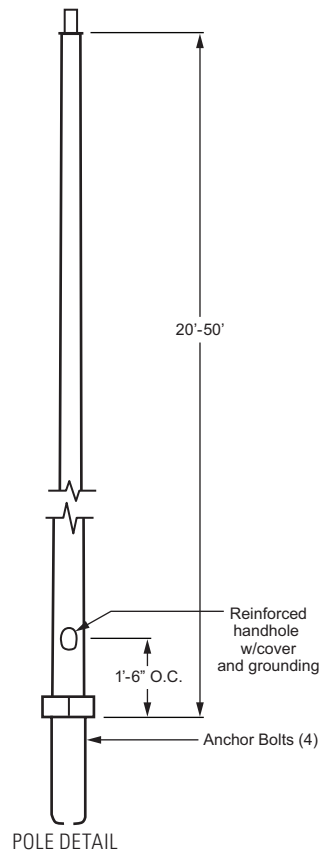
20' POLE		25' POLE	
<b>0590<sup>2</sup></b>	5.90" <sup>2</sup>	<b>0590<sup>2</sup></b>	5.90" <sup>2</sup>
<b>0650</b>	6.50"	<b>0700</b>	7.00"
30' POLE		35' POLE	
<b>0660</b>	6.60"	<b>0730</b>	7.30"
<b>0800</b>	8.00"	<b>0850</b>	8.50"
		<b>0950</b>	9.50"
39' POLE		45' POLE	
<b>0782</b>	7.82"	<b>1000</b>	10.00"
<b>0900</b>	9.00"		
50' POLE			
<b>1000</b>	10.00"		

<sup>2</sup> 3" x 5" nominal handhole - all others 4" x 6.5" nominal.

### WALL THICKNESS\* (Must specify)

<b>7</b>	7-gauge (0.1793")
<b>11</b>	11-gauge (0.1196")

\* For available Base Diameter, Wall Thickness and Height combinations, see Load and Dimensional Data Table on page 5C.



## RTS SERIES

**SHAFT** — The pole shaft conforms to ASTM A595 Grade A or A572 Grade 55 with a constant linear taper of 0.14 in/ft.

**POLE TOP** — A pole top plate and tenon (must specify size) are provided for top mount luminaire or Williams' pole top assembly.

**HANDHOLE** — A covered handhole and grounding provision with hardware is provided.

**FULL BASE COVER** — The two-piece standard full base cover is fabricated from ABS plastic.

**ANCHOR BASE** — The anchor base (base plate) conforms to ASTM A36.

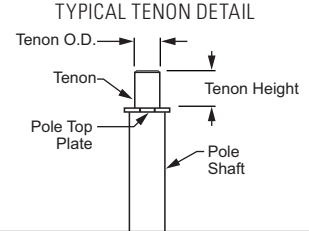
**HARDWARE** — All structural fasteners are galvanized high strength carbon steel. All non-structural fasteners are galvanized or zinc-plated carbon steel or stainless steel.

### FIXTURE MOUNTING

Designed for pole top tenon. See Williams' Pole Top Assemblies for various fixture mounting tenon and arm assemblies.

### FIXTURE MOUNTING (Must specify)

<b>T238</b>	2-3/8" O.D. x 4" Round Tenon (Use with Williams' Pole Top Tenon Mounts)
<b>T278</b>	2-7/8" O.D. x 4" Round Tenon
<b>T33</b>	3" O.D. x 3" Round Tenon (Use with Williams' Historic Pole Top Assemblies)
<b>T312</b>	3-1/2" O.D. x 12" Round Tenon (Use with Williams' AVPT Decorative Pole Top Assemblies)
<b>TC ____</b>	Custom Round Tenon (Must specify tenon diameter (O.D.) and height, consult factory)



### FINISH OPTIONS

Polyester powder coat applied over chromate pre-treatment.

### FINISH OPTIONS (Must specify)

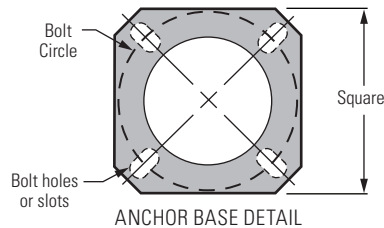
<b>BLK</b>	Black (RAL#9004)	<b>DBR</b>	Dark Bronze (Protech #PC21462)
<b>GRAY</b>	Standard Gray (Protech #PC18367)	<b>GRN</b>	Green (RAL#6005)
<b>SLV</b>	Satin Aluminum (RAL#9006)	<b>WHT</b>	White (RAL#9003)
<b>RAL# ____</b>	Specify custom color		

### ANCHOR BOLTS

Anchor bolts conform to ASTM F1554 Grade 55 and are provided with two hex nuts and two flat washers. Bolts have an "L" bend on one end and are galvanized a minimum of 12" on the threaded end. Template provided with every pole and anchor bolt order.

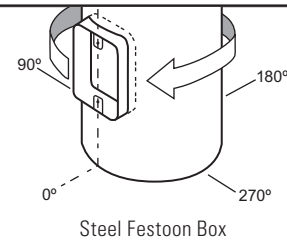
### ANCHOR BOLTS (Must specify)

	AB	Anchor bolts (4 each, shipped with pole)	POLE		ANCHOR BASE		ANCHOR BOLTS				
			BASE O.D. (IN)	WALL THK (GA)	BOLT CIRCLE		SQ. (IN)	THK (IN)	BOLT SIZE (IN)	PROJ. (IN)	± (IN)
LAB	Less anchor bolts		DIA (IN)	± (IN)							
PAB	Pre-shipped Anchor Bolts (4 each)										
			5.90	11	9.00	0.50	10.00	0.875	1.00 x 36.00 x 4.00	4.13	0.25
			6.50	11	9.50	0.50	10.50	0.875	1.00 x 36.00 x 4.00	4.13	0.25
			6.60	11	9.50	0.50	10.50	0.875	1.00 x 36.00 x 4.00	4.13	0.25
			7.00	11	10.00	0.50	10.88	0.875	1.00 x 36.00 x 4.00	4.13	0.25
			7.00	7	10.00	0.50	10.88	1.000	1.00 x 36.00 x 4.00	4.25	0.25
			7.30	11	10.50	0.50	11.25	0.875	1.00 x 36.00 x 4.00	4.13	0.25
			7.82	11	11.00	0.50	11.50	0.875	1.00 x 36.00 x 4.00	4.13	0.25
			8.00	11	11.00	0.50	11.50	0.875	1.00 x 36.00 x 4.00	4.13	0.25
			8.00	7	11.00	0.50	11.50	1.250	1.25 x 42.00 x 6.00	5.00	0.25
			8.50	11	11.50	0.50	12.00	1.000	1.00 x 36.00 x 4.00	4.25	0.25
			9.00	11	12.50	0.50	12.38	1.000	1.00 x 36.00 x 4.00	4.25	0.25
			9.00	7	12.50	0.50	12.38	1.250	1.25 x 42.00 x 6.00	5.00	0.25
			9.50	11	13.00	0.50	13.00	1.000	1.00 x 36.00 x 4.00	4.25	0.25
			10.00	11	13.50	0.50	14.00	1.000	1.00 x 36.00 x 4.00	4.25	0.25
			10.00	7	13.50	0.50	14.00	1.250	1.25 x 42.00 x 6.00	5.00	0.25



### OPTIONS

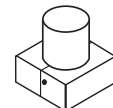
<b>FS</b>	Festoon Box only
<p><b>NOTE: Casting only. Outlet, cover and hardware by others. The festoon box is located above the access door at 0°, approximately 41" above ground level.</b></p>	



### OPTIONS

**FULL BASE COVER** — H.E. Williams, Inc. reserves the right to provide an optional two-piece steel full base cover on some applications depending upon the finish requirement and/or pole base diameter.

<b>FBCS</b>	Full Base Cover, Steel
<b>NC</b>	Nut Covers



FULL BASE COVER

### NUT COVERS

Optional anchor bolt nut covers are available upon request.



## LOAD AND DIMENSIONAL DATA

HEIGHT (FT)	CATALOG NUMBER	SHAFT				80 MPH <sup>3,4</sup>		90 MPH <sup>3,4</sup>		100 MPH <sup>3,4</sup>	
		BASE O.D. (IN)	TOP O.D. (IN)	WALL THK. (GA)	STRUCT. WT. <sup>5</sup> (LBS)	MAX EPA (SQ FT)	MAX WEIGHT (LBS)	MAX EPA (SQ FT)	MAX WEIGHT (LBS)	MAX EPA (SQ FT)	MAX WEIGHT (LBS)
20	RTS-200-0590-11 <sup>6</sup>	5.9	3.1	11	140	19.3	482	15.1	377	12.2	305
	RTS-200-0650-11	6.5	3.7	11	160	24.2	605	19.3	482	15.6	390
25	RTS-250-0590-11 <sup>6</sup>	5.9	2.4	11	155	12.5	312	9.9	247	8.0	200
	RTS-250-0700-11	7.0	3.5	11	200	20.3	507	16.2	405	13.1	327
	RTS-250-0700-7	7.0	3.5	7	280	30.5	760	24.0	625	19.8	495
30	RTS-300-0660-11	6.6	2.4	11	200	11.7	292	9.3	232	7.5	187
	RTS-300-0800-11	8.0	3.8	11	265	18.9	473	14.9	373	12.0	300
	RTS-300-0800-7	8.0	3.8	7	380	33.5	838	27.0	675	22.0	550
35	RTS-350-0730-11	7.3	2.4	11	250	11.2	280	8.9	222	7.1	177
	RTS-350-0850-11	8.5	3.6	11	315	18.9	472	15.1	377	12.2	305
	RTS-350-0950-11	9.5	4.6	11	370	23.2	580	18.2	455	14.5	363
39	RTS-390-0782-11	7.8	2.4	11	285	267	292	9.3	232	7.5	187
	RTS-390-0900-11	8.0	3.8	11	265	18.9	473	14.9	373	12.0	300
	RTS-390-0900-7	8.0	3.8	7	380	33.5	838	27.0	675	22.0	550
45	RTS-450-1000-11	10.0	3.7	11	450	17.4	435	13.5	338	10.6	265
	RTS-450-1000-7	10.0	3.7	7	650	28.5	715	23.0	575	19.0	475
50	RTS-500-1000-11	10.0	3.0	11	475	13.2	330	10.6	265	8.3	208
	RTS-500-1000-7	10.0	3.0	7	680	20.5	512	16.5	412	13.6	340

<sup>3</sup> Maximum weight and Effective Projected Area (EPA) values are based on a 1.3 gust factor for top mounted luminaires or arm assemblies having a centroid 2'-6" above the nominal mounting height. Variations from sizes above are available upon inquiry. Satisfactory performance of poles is dependent upon the pole being properly attached to a supporting foundation of adequate design. See Williams Outdoor Information Section, page 6, for Load and Dimensional Data specifics.

<sup>4</sup> Wind map provided in Williams Outdoor information section, pole information page 6.

<sup>5</sup> Structure weight is a nominal value which includes the pole shaft and base plate only.

<sup>6</sup> 3' x 5" nominal handhole - all others 4" x 6.5" nominal.

\* Pole installations in various parts of the country perform satisfactorily; however, in select locations destructive vibration can occur. H.E. Williams, Inc. is not responsible for vibration induced fatigue damage.

• H.E. Williams, Inc. warrants this product to be free from defects in materials and workmanship. Any defective part returned within one year from the date of delivery of the goods will be repaired or replaced without charge, F.O.B. factory.

This warranty specifically excludes fatigue or similar phenomena resulting from induced vibration, harmonic oscillation or resonance associated with movement of air currents around the product.

The above warranties are given in lieu of all other warranties express or implied, including without limitation, the warranty of merchantability and the warranty of suitability for a particular purpose. It is expressly stated that H.E. Williams, Inc. assumes no liability for consequential or liquidated damages arising out of a breach of the sale, including any warranties arising therefrom, and buyer's remedy shall be limited to repair or replacement of defective parts as described above.

Any action for the breach under a sale including any warranties arising therefrom must be commenced within one year after the cause of action accrues.

**RTS**

**ROUND TAPERED STEEL POLE**

