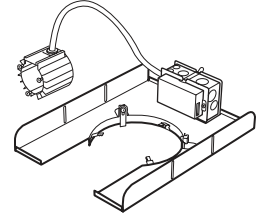


RETROFIT MOUNTING PAN ASSEMBLY

RETRO

SUBMITTAL:

JOB:



EXAMPLE: **PH75** - **2 32T** - **GX24q-3** - **RETRO** - **UNV**
 ↓ ↓ ↓ ↓ ↓
 SERIES TOTAL WATTAGE LAMPS LAMP BASE OPTIONS VOLTAGE

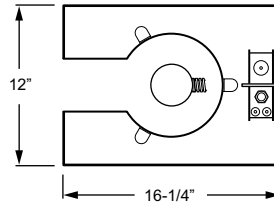
RETROFIT MOUNTING PAN ASSEMBLY

This fixture is proudly made in the USA.

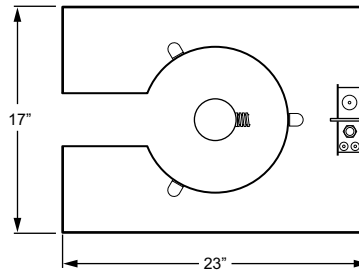
Use the Retrofit Mounting Pan when remodeling or replacing fixtures where there is a finished ceiling with fixed apertures. The mounting pan is cut out on one side to "hook" the assembly through an existing hole. Two sizes are available to fit a variety of reflector sizes.

FEATURES

- ▶ Sturdy one-piece construction.
- ▶ 20-gauge die-formed galvanized steel.
- ▶ Easy-access 14-gauge galvanized steel junction box with two snap-on covers.



Pan Size: 12" x 16-1/4"
Reflectors: 6", 7-1/2", 8-1/2" dia.



Pan Size: 17" x 23"
Reflectors: 10", 12", 13" dia.

