

DESIGNER WALL PACK – ROUND

WPRD

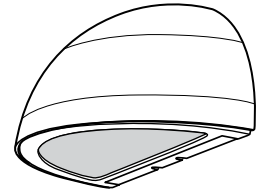
SUBMITTAL:

CFL

JOB:

TYPE:

VOLTAGE:



EXAMPLE: **WPRD** - **1 42T** - **GX24q-4** - **WD** - **OPTIONS** - **UNV**

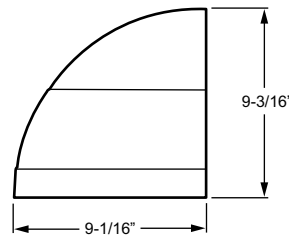
▼
▼
▼
▼
▼
▼

SERIES # OF WATTAGE LAMPS LAMP BASE DISTRIBUTION OPTIONS VOLTAGE

SERIES

FEATURES

- ▶ Overall dimensions: 18" x 9-3/16" x 9-1/16".
- ▶ Heat and impact-resistant tempered glass lens.
- ▶ Heavy-duty die-cast aluminum construction.
- ▶ Fully gasketed for wet locations.
- ▶ Provides full cutoff.
- ▶ Dark bronze finish only.



WPRD SERIES

HOUSING — Die-cast aluminum.
REFLECTIVE SURFACES — Aluminum reflector.
LENS — Tempered, flat, clear glass.

LAMP OPTIONS (Must specify)

COMPACT FLUORESCENT

# LAMPS	WATTAGE	LAMP BASE
1	26Q	G24q-3
1	32T	GX24q-3
1	42T	GX24q-4

DISTRIBUTION (Must specify)

WD	Wide Distribution
FD	Forward Throw Distribution

OPTIONS

SF	Single Fuse (120V or 277V only; must specify voltage)
DF	Double Fuse (208V or 240V only; must specify voltage)
GMF	HLR-GMF Style Slow Blow Fuse (Factory installed inside of unit. 120V and 277V only; must specify voltage)

VOLTAGE (Must specify)

120	120V	208	208V
240	240V	277	277V
UNV	120-277V		

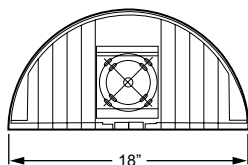
ELECTRICAL

4-pin socket, electronic ballast standard. Prewired at factory for easy field installation. Rated 0°F minimum starting temperature.

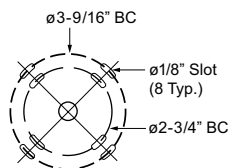
FINISH

Powder coated finish on heavy-duty die-cast housing. Dark bronze finish only.

MOUNTING



BACK VIEW

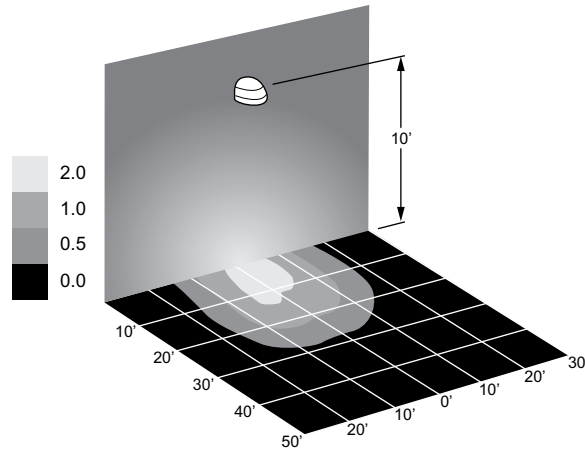


BOLT CIRCLE PATTERN DETAIL

MOUNTING

Wall mounts directly over a 4" maximum recessed outlet box.

FOOTCANDLE ESTIMATOR



FIXTURE: **WPRD-142T-GX24q-4-FD**

Footcandle calculations based on standard building reflectance of .10 with a ground reflectance of .0 and a light loss factor of .75.

Fixture installed at 15' mounting height.

LABELS

cCSAus certified as luminaire suitable for wet location.