

# HIGH EFFICIENCY TROFFER – AIR RETURN

# HET

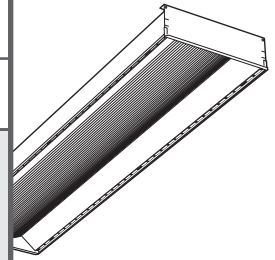
**SUBMITTAL:**

**1' WIDE T5**

**JOB:**

**TYPE:**

**VOLTAGE:**



EXAMPLE

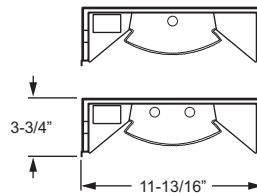
**HET G - AR 1 4 - 1 54T5H - A - OPTIONS - EB1 - UNV**

SERIES    CEILING TYPE    FIXTURE STYLE    NOM. W.    NOM. L.    TOTAL LAMPS    WATTAGE/TYPE    SHIELDING    OPTIONS    BALLAST TYPE    VOLTAGE



## FEATURES

- ▶ Black reveal minimizes appearance of dirt and dust resulting from air return function.
- ▶ Air return capability reduces number of unsightly ceiling vents for a cleaner appearance.
- ▶ Frosted acrylic diffuser combined with highly reflective matte white paint provides high optical efficiencies without sacrificing visual comfort.
- ▶ One-piece diffuser eliminates the need for separate overlays.
- ▶ Attractive, energy efficient architectural fixture delivers comfortable, uniform lighting.
- ▶ Shallow fixture depth allows for use in limited plenum applications.
- ▶ Optional anti-microbial powder coating available to prevent the spread of dangerous micro-organisms and suppress the growth of mold and bacteria.
- ▶ Tool-less access to electrical from room side of fixture.
- ▶ Integral T-bar clips quickly secure fixture to structure.
- ▶ This fixture is proudly made in the USA.



## SPECIFICATIONS

**Housing** – 22-gauge die-formed C.R.S.  
**Shielding** – Ribbed acrylic diffuser.  
**Finish** – Highly reflective non-glare matte white polyester powder coat bonded to phosphate-free, multi-stage pretreated metal. All parts painted after fabrication to facilitate installation, increase efficiency, and inhibit corrosion.  
**Electrical** – Electronic ballast standard, program start T5, rated Class P.  
**Mounting** – NEMA Type “G”.  
**Labels** – UL/CUL listed as recessed fluorescent luminaire suitable for dry or damp locations.

## ORDERING INFORMATION

### SERIES

**HET** High Efficiency Troffer–Air Return

### CEILING TYPE

**G** NEMA Type “G”

### FIXTURE STYLE

**AR** Air return only (through side slots)

### NOMINAL WIDTH

**1** 1'

### NOMINAL LENGTH

**2** 2'  
**4** 4'

### TOTAL LAMPS

**1 or 2**

### LAMP WATTAGE/TYPE

#### 2' LAMP OPTIONS

**14T5S** 2', 14-watt T5  
**24T5H** 2', 24-watt T5HO (1-lamp only)

#### 4' LAMP OPTIONS

**28T5S** 4', 28-watt T5  
**54T5H** 4', 54-watt T5HO (1-lamp only)

### SHIELDING

**A** Acrylic lens

### OPTIONS

For generic EM ballast options (must specify voltage), see Fluorescent Information section.

**AMW** Anti-microbial white finish  
**EQCLIPS** Earthquake clips (4 per fixture)

### BALLAST TYPE

**EB1** 1-lamp electronic ballast  
**EBSD(95)1** 1-lamp electronic ballast, step-dimming, .95 ballast factor (T5S only)  
**EBSD(115)1** 1-lamp electronic ballast, step-dimming, 1.15 ballast factor (T5S only)  
**EB2** 2-lamp electronic ballast  
**EBSD(95)2** 2-lamp electronic ballast, step-dimming, .95 ballast factor (T5S only)  
**EBSD(115)2** 2-lamp electronic ballast, step-dimming, 1.15 ballast factor (T5S only)

### VOLTAGE

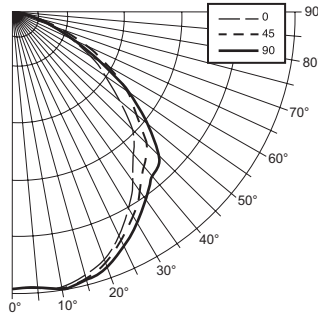
**120** 120V  
**277** 277V  
**UNV** 120-277V  
**347** 347V

### PHOTOMETRY INFORMATION

Catalog #: HETG-AR14-154T5H-A

#### TEST REPORT INFORMATION

- ▶ Test Report #: 15486.0
- ▶ Date: 06/22/06
- ▶ Lamp Type: FP54T5HO
- ▶ Lamp Quantity: 1



#### CANDLEPOWER DISTRIBUTION

Vertical Angle	Horizontal Angle			Zonal Lumens
	0°	45°	90°	
0°	1606.	1606.	1606.	
5°	1601.	1601.	1601.	152.8
15°	1583.	1596.	1608.	452.2
25°	1438.	1472.	1507.	681.3
35°	1211.	1279.	1341.	802.1
45°	987.	1102.	1200.	849.5
55°	668.	805.	831.	695.9
65°	405.	489.	398.	440.1
75°	189.	182.	126.	183.4
85°	40.	20.	16.	27.3
90°	0.	0.	0.	

#### ZONAL CAVITY COEFFICIENTS

	Ceiling	.80			.70			.50		
	Wall	.70	.50	.30	.70	.50	.30	.50	.30	.10
Room Cavity Ratio	0	1.02	1.02	1.02	1.0	1.0	1.0	.95	.95	.95
	1	.95	.91	.88	.93	.89	.87	.86	.83	.81
	2	.87	.81	.76	.85	.80	.75	.77	.73	.69
	3	.81	.73	.66	.79	.71	.65	.69	.64	.60
	4	.74	.65	.58	.72	.64	.57	.62	.56	.52
	5	.68	.57	.50	.66	.57	.50	.55	.49	.44
	6	.62	.52	.44	.61	.51	.44	.49	.43	.39
	7	.57	.46	.39	.56	.46	.39	.44	.38	.34
	8	.53	.42	.34	.52	.41	.34	.40	.34	.29
	9	.49	.37	.30	.47	.37	.30	.36	.30	.25
	10	.45	.34	.27	.44	.33	.27	.32	.26	.22

Effective Floor Cavity Reflectance = .20

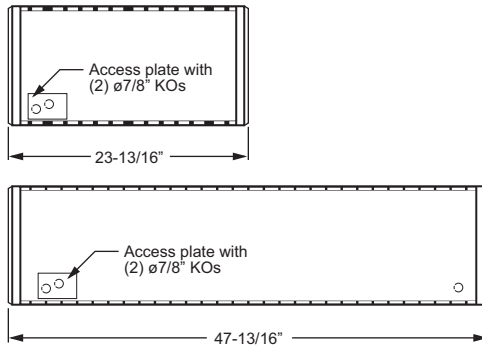
#### LUMEN SUMMARY

Zone	Lumens	% Lamp	% Fixture
0 - 30	1286.	25.7	30.0
0 - 40	2088.	41.8	48.7
0 - 60	3634.	72.7	84.8
0 - 90	4285.	85.7	100.0
<b>Total Luminaire:</b>			
0 - 180	4285.	85.7	100.0

Total Luminaire Optical Efficiency: **85.7%**  
 IES Spacing Criteria: End = 1.2  
 Diagonal = 1.3  
 Across = 1.3

### FIXTURE DETAILS

#### BACKVIEW



#### AIR RETURN

