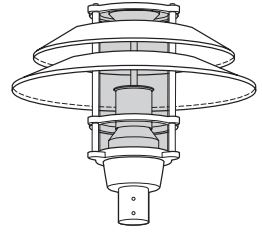


CONTEMPORARY POST TOP LUMINAIRE WITH ANGLED HOOD

OPK



SUBMITTAL:

JOB:

TYPE:

VOLTAGE:

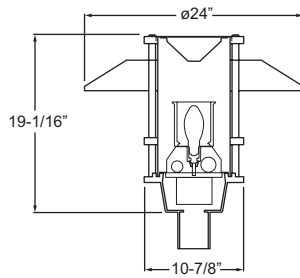
EXAMPLE: **OPK - 150PSMH120 - DH - T5GR - 3TM - DBR - OPTIONS**

SERIES ELECTRICAL PACKAGE HOOD DISTRIBUTION MOUNTING POINT FINISH OPTIONS OPTIONS

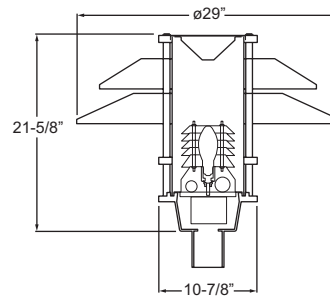


SERIES

OPK — A clear cylindrical enclosure is combined with a variety of hood configurations to direct the majority of light downward, while a prismatic glass refractor or an aluminum stack refractor provides uniform, Type V distribution.



Shown with SH24 and T5GR options



Shown with DH and T5SR options

OPK SERIES HOUSING & ENCLOSURE —

One-piece cast aluminum ballast housing. Impact-resistant acrylic enclosure. Fully gasketed for weathertight performance.

Total Fixture EPA & Weight			
Hood	EPA	Weight	
		T5GR	T5SR
SH24	1.42	29 Lbs.	27 Lbs.
SH29	1.50	30 Lbs.	29 Lbs.
DH	1.87	35 Lbs.	33 Lbs.

ELECTRICAL PACKAGE (Must specify)

PULSE START METAL HALIDE

Lamp:	ED-17/E17	ED-17/E17	ED-17/E17	ED-17/E17
Socket:	E26 Medium	E26 Medium	E26 Medium	E26 Medium
ANSI Ballast Code:	M110/M148	M98/M143	M90/M140	M102/M142
50PSMH120	70PSMH120	100PSMH120	150PSMH120	
50PSMH208	70PSMH208	100PSMH208	150PSMH208	
50PSMH240	70PSMH240	100PSMH240	150PSMH240	
50PSMH277	70PSMH277	100PSMH277	150PSMH277	
	70PSMH347	100PSMH347	150PSMH347	
		100PSMH480	150PSMH480	

HIGH PRESSURE SODIUM

Lamp:	E17	E17	E17	E17
Socket:	E26 Medium	E26 Medium	E26 Medium	E26 Medium
ANSI Ballast Code:	S68	S62	S54	S55
50HPS120	70HPS120	100HPS120	150HPS120	
50HPS208	70HPS208	100HPS208	150HPS208	
50HPS240	70HPS240	100HPS240	150HPS240	
50HPS277	70HPS277	100HPS277	150HPS277	
	70HPS347	100HPS347	150HPS347	
		100HPS480	150HPS480	

ELECTRICAL PACKAGE

PSMH — Rated -20°F minimum starting temperature.

HPS — Rated -40°F minimum starting temperature.

All PSMH and HPS electrical packages include porcelain socket and integral ballast mounted on removable ballast tray. Prewired at factory to a disconnect plug for easy field installation. HX-HPF or CWA ballast type standard. Lamp is optional, please specify when ordering.

HOOD

Spun aluminum reflector hood(s) with a removable cap for relamping, secured with three support rods. Underside finish is highly reflective white polyester powder coat.

HOOD (Must specify)

SH24	Single ø24" hood
SH29	Single ø29" hood
DH	Double hood, stacked (1) ø24" hood with (1) ø29" hood

DISTRIBUTION (Must specify)

DISTRIBUTION

Type V distribution.



T5GR	Type V glass refractor
T5SR	Type V stack refractor

MOUNTING POINT

Post top mounting on 2-3/8", 2-7/8", or 3" O.D. tenon or pole top. Secured with stainless steel set screws. See Williams' Poles or Pole Top Assemblies for details.

MOUNTING POINT (Must specify)

238TM	2-3/8" tenon mount
278TM	2-7/8" tenon mount
3TM	3" tenon mount

FINISH OPTIONS (Must specify)

FINISH OPTIONS

Super durable polyester powder coat meets and exceeds AAMA 2604 specifications for outdoor durability.

BLK	Black (RAL #9004)
DBR	Dark bronze (Protech #PC21462)
GRAY	Standard gray (Protech #PC18367)
GRN	Green (RAL #6005)
SLV	Satin aluminum (RAL #9006)
WHT	White (RAL #9003)
RAL#_____	Specify custom color

OPTIONS

SF	Single fuse (120V, 277V, or 347V only; must specify voltage)
DF	Double fuse (208V, 240V, or 480V only; must specify voltage)

LABELS

cCSAus certified as luminaire suitable for wet location.