

LOW-PROFILE REMOTE BALLAST STRIP – 6" OVERLAP

72L6

SUBMITTAL:

T5 | T8

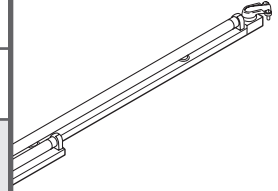
JOB:

TYPE:

VOLTAGE:

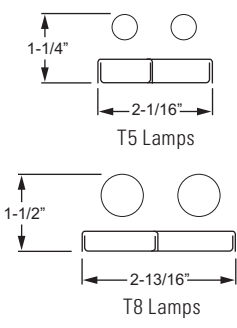
EXAMPLE → **72L6 - 2 - 2 17 - OPTIONS - EB2*AD - UNV**

SERIES NOMINAL LENGTH TOTAL WATTAGE/ LAMPS TYPE ACCESSORIES BALLAST TYPE VOLTAGE



FEATURES

- ▶ Extremely shallow profile and remote ballast allow for use in confined spaces—ideal for cove lighting.
- ▶ Up to 94% efficient.
- ▶ Designed with 6" overlap to ensure uniform illumination over the length of the fixture.
- ▶ Remote-mount ballast box is connected to the fixture with 3/8" flex conduit.
- ▶ Factory-mounted, prewired sockets reduce installation time.
- ▶ Quick-connect is standard between fixture and ballast box for easy plug-and-play installation.
- ▶ Special reflectors available for precise light distribution (see 72REFL specification sheet).
- ▶ This fixture is proudly made in the USA.



SPECIFICATIONS

Housing – 20-gauge die-formed C.R.S.
Ballast Box – 18-gauge galvanized steel.
Housing Finish – 92% minimum average reflective white polyester powder coat bonded to phosphate-free, multi-stage pretreated metal. All C.R.S. parts painted after fabrication to facilitate installation, increase efficiency, and inhibit corrosion.
Electrical – All ballast types may not be available. Consult factory for options other than those listed. Note: EM ballasts not available on 72L6 Series. T5 Program Start: Electronic program start ballast, rated Class P. Includes 9' flexible whip. T8 Instant Start: Electronic instant start ballast, rated Class P. Includes 12' flexible whip (except on fixtures using 4' lamps which reduces whip length to 11'). T8 Program Start: Electronic program start ballast, rated Class P. Includes 2-1/2' flexible whip.
Mounting – Surface mount.
Labels – UL/CUL listed as fluorescent luminaire suitable for dry or damp locations.

ORDERING INFORMATION

SERIES
72L6 Low-Profile Remote Ballast Strip–6" Overlap

NOMINAL LAMP LENGTH
 8' maximum nominal fixture length.
2 2'
3 3'
4 4'

TOTAL LAMPS
2

LAMP WATTAGE/TYPE
 Not for use with energy saving/reduced wattage lamps.
14T5S 2', 14-watt T5
17 2', 17-watt T8
24T5H 2', 24-watt T5HO
21T5S 3', 21-watt T5
25 3', 25-watt T8
39T5H 3', 39-watt T5HO
28T5S 4', 28-watt T5
32 4', 32-watt T8
54T5H 4', 54-watt T5HO

ACCESSORIES
 For compatible reflectors (ordered separately), see 72REFL specification sheet.

BALLAST TYPE
 See detailed ballast types and compatible dimming ballast tables on following pages.
Note: EM ballasts not available on 72L6 Series.

VOLTAGE
UNV 120-277V

T5 | T8

BALLAST TYPE & WHIP LENGTH (Effective July 29, 2010, subject to change without notice.)

The information provided in the tables below (effective July 29, 2010) is intended to be a general guide to ballast options and whip lengths. The degree of accuracy is reliant solely on information provided by ballast manufacturers and is subject to change without notice.

T5S					
Catalog Number	Ballast Type	Ballast Options			Whip Length (in feet)
		Advance (Example: EB2*AD)	Osram (Example: EB2*OS)	ULT (Universal) (Example: EB2*UT)	
72L6-2-214T5S	EB2*__		•	•	9'
72L6-3-221T5S	EB2*__		•	•	9'
72L6-4-228T5S	EB2*__		•	•	9'

T5HO					
Catalog Number	Ballast Type	Ballast Options			Whip Length (in feet)
		Advance (Example: EB2*AD)	Osram (Example: EB2*OS)	ULT (Universal) (Example: EB2*UT)	
72L6-2-224T5H	EB2*__		•	•	9'
72L6-3-239T5H	EB2*__		•	•	9'
72L6-4-254T5H	EB2*__		•	•	9'

T8 Instant Start					
Catalog Number	Ballast Type	Ballast Options			Whip Length (in feet)
		Advance (Example: EB2*AD)	Osram (Example: EB2*OS)	ULT (Universal) (Example: EB2*UT)	
72L6-2-217	EB2*__	•	•	•	12'
72L6-3-225	EB2*__	•	•		12'
72L6-4-232	EB2*__	•	•		11'

T8 Program Start					
Catalog Number	Ballast Type	Ballast Options			Whip Length (in feet)
		Advance (Example: EB2*AD)	Osram (Example: EB2*OS)	ULT (Universal) (Example: EB2*UT)	
72L6-2-217	EB2*__	•	•	•	2-1/2'
72L6-3-225	EB2*__	•	•	•	2-1/2'
72L6-4-232	EB2*__			•	2-1/2'

For compatible dimming ballasts, see next page.

COMPATIBLE DIMMING BALLASTS & WHIP LENGTHS (Effective July 29, 2010, subject to change without notice.)

The information provided in the tables below (effective July 29, 2010) is intended to be a comprehensive guide for compatible dimming ballast options and whip lengths. The degree of accuracy is reliant solely on information provided by ballast manufacturers and is subject to change without notice.

T5S																	
Catalog Number	Ballast Type ¹	Advance IOPSD		Osram PHO DIM		ULT HWSO		ULT 95SD		ULT SUPERDIM		Lutron ECO		Lutron Ecosystem		Lutron Hi-Lume 3D	
		Available	Whip Length	Available	Whip Length	Available	Whip Length	Available	Whip Length	Available	Whip Length	Available	Whip Length	Available	Whip Length	Available	Whip Length
72L6-2-214T5S	EBD2*__					•	3-1/2'	•	3-1/2'			•	2-1/2'	•	2-1/2'	•	2-1/2'
72L6-3-221T5S	EBD2*__					•	1-1/2'	•	1-1/2'								
72L6-4-228T5S	EBD2*__																

T5HO																	
Catalog Number	Ballast Type ¹	Advance IOPSD		Osram PHO DIM		ULT HWSO		ULT 95SD		ULT SUPERDIM		Lutron ECO		Lutron Ecosystem		Lutron Hi-Lume 3D	
		Available	Whip Length	Available	Whip Length	Available	Whip Length	Available	Whip Length	Available	Whip Length	Available	Whip Length	Available	Whip Length	Available	Whip Length
72L6-2-224T5H	EBD2*__											•	2-1/2'	•	2-1/2'	•	2-1/2'
72L6-3-239T5H	EBD2*__																
72L6-4-254T5H	EBD2*__																

T8																			
Catalog Number	Ballast Type ¹	Advance Mark 7		Advance Mark 10		Advance ILV		Osram Powersense		ULT BallaStar		ULT SUPERDIM		Lutron ECO		Lutron Ecosystem		Lutron Hi-Lume 3D	
		Available	Whip Length	Available	Whip Length	Available	Whip Length	Available	Whip Length	Available	Whip Length	Available	Whip Length	Available	Whip Length	Available	Whip Length	Available	Whip Length
72L6-2-217	EBD2*__	•	1-1/2'	•	1-1/2'	•	2-1/2'	•	3-1/2'			•	3-1/2'	•	2-1/2'	•	2-1/2'	•	2-1/2'
72L6-3-225	EBD2*__											•	1-1/2'						
72L6-4-232	EBD2*__									•	3-1/2'								

¹ Insert manufacturer's code provided below.

BALLAST MANUFACTURER'S CODE

AD	Advance	LU	Lutron
OS	Osram	UT	ULT (Universal)

Example: 72L6-2-217-EBD2*AD-UNV

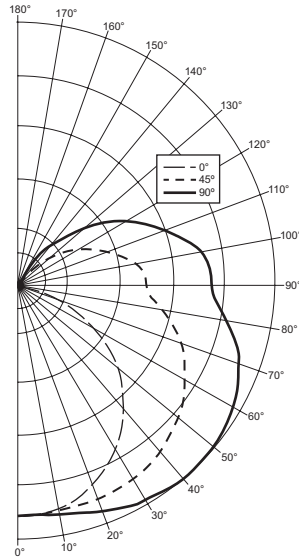
For photometry, see next page.

PHOTOMETRY INFORMATION

Catalog #: 72L6-2-217-EB2

TEST REPORT INFORMATION

- ▶ Test Report #: 15588.0
- ▶ Date: 06/30/10
- ▶ Lamp Type: F17T8
- ▶ Lamp Quantity: 2
- ▶ Rated Lumens: 1400.



CANDLEPOWER DISTRIBUTION

Vertical Angle	Horizontal Angle			Zonal Lumens
	0°	45°	90°	
0°	398.	398.	398.	
5°	398.	396.	398.	37.9
15°	384.	395.	406.	112.0
25°	352.	391.	423.	180.1
35°	308.	385.	435.	237.4
45°	252.	370.	440.	277.8
55°	191.	346.	436.	297.1
65°	121.	318.	420.	296.2
75°	55.	280.	391.	272.1
85°	9.	233.	344.	227.9
90°	1.	220.	333.	
95°	0.	219.	332.	214.1
105°	0.	190.	302.	181.4
115°	0.	149.	250.	135.2
125°	0.	111.	196.	92.6
135°	0.	68.	131.	51.4
145°	0.	34.	79.	22.7
155°	0.	13.	31.	6.4
165°	0.	0.	6.	0.6
175°	0.	0.	0.	0.0
180°	0.	0.	0.	

ZONAL CAVITY COEFFICIENTS

	.80			.70			.50			
	Wall	.70	.50	.30	.70	.50	.30	.50	.30	.10
Room Cavity Ratio 0	1.06	1.06	1.06	1.01	1.01	1.01	.91	.91	.91	
1	.94	.88	.83	.89	.84	.79	.75	.71	.68	
2	.84	.75	.68	.79	.71	.64	.64	.58	.53	
3	.76	.65	.57	.72	.62	.54	.55	.49	.44	
4	.69	.57	.48	.65	.54	.46	.48	.42	.36	
5	.63	.50	.41	.59	.47	.39	.42	.35	.30	
6	.57	.44	.35	.54	.42	.34	.38	.31	.26	
7	.53	.40	.31	.50	.38	.30	.34	.27	.22	
8	.49	.35	.27	.46	.34	.26	.30	.24	.19	
9	.45	.32	.24	.42	.30	.23	.27	.21	.16	
10	.42	.29	.21	.39	.28	.20	.25	.19	.14	

Effective Floor Cavity Reflectance = .20

LUMEN SUMMARY

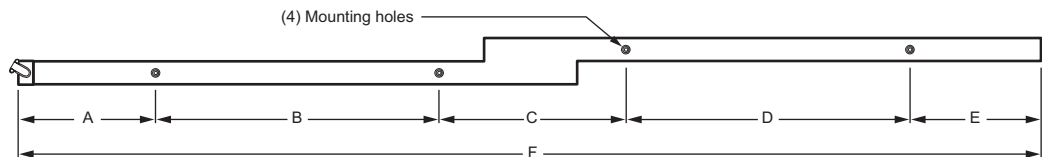
Zone	Lumens	% Lamp	% Fixture
0 - 30	330.	11.8	12.5
0 - 40	567.	20.3	21.5
0 - 60	1142.	40.8	43.2
0 - 90	1939.	69.2	73.3
90 - 120	531.	19.0	20.1
90 - 130	623.	22.3	23.6
90 - 150	698.	24.9	26.4
90 - 180	705.	25.2	26.7
Total Luminaire:			
0 - 180	2643.	94.4	100.0

Total Luminaire Optical Efficiency: **94.4%**
 IES Spacing Criteria: End = 1.2
 Diagonal = 1.5
 Across = 1.7

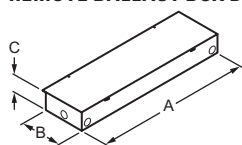
FIXTURE DETAILS

DIMENSIONS

Nominal Fixture Length	T5 Fixtures						T8 Fixtures					
	A	B	C	D	E	F	A	B	C	D	E	F
2'	5-7/8"	12"	4-1/4"	12"	5-5/16"	39-7/16"	6-5/8"	12"	5-3/4"	12"	6-1/16"	42-7/16"
3'	8-3/4"	18"	10-1/16"	18"	8-3/16"	63"	9-5/8"	18"	11-3/4"	18"	9-1/16"	66-7/16"
4'	11-5/8"	24"	15-3/4"	24"	11-1/8"	86-1/2"	12-5/8"	24"	17-3/4"	24"	12-1/16"	90-7/16"



REMOTE BALLAST BOX DETAILS



No. of Ballasts	Dimensions		
	A	B	C
1 ballast	19"	3-1/4"	1-5/8"