

# Williams Lighting Lookbook

Luminaires | Controls | Human-Centric

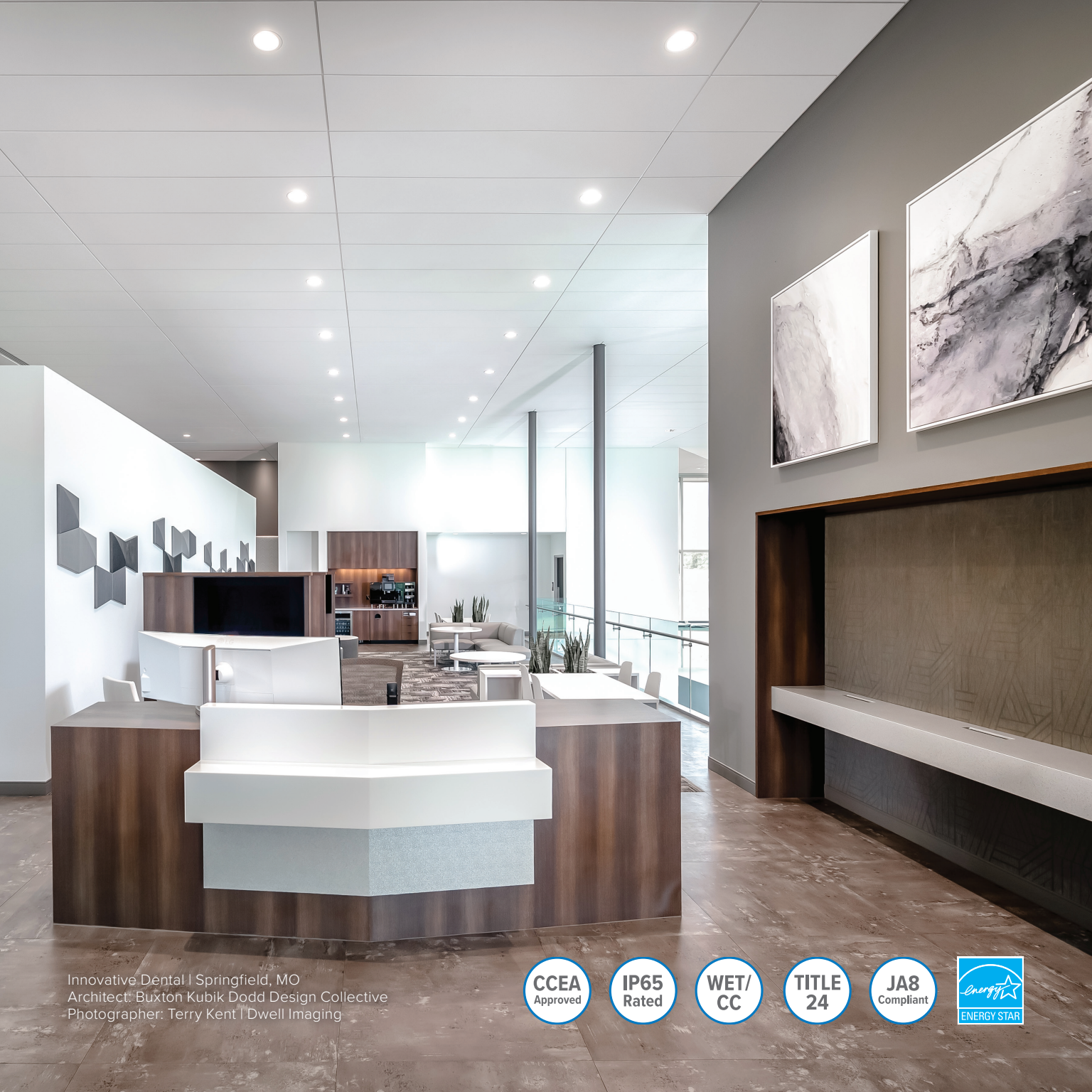


## A Visible Difference®

H.E. Williams, Inc. designs and builds the most extensive line of American-made luminaires featuring advanced LED technologies and integrated lighting controls.

Founded in 1921, we are a third-generation, family-owned and -operated lighting manufacturer. With over a century in business, we produce and ship products from our factory in Carthage, Missouri. Exceptional quality and customer service makes us the most trusted brand in lighting. Working with Williams is simply easier and friendlier.





Innovative Dental | Springfield, MO  
Architect: Buxton Kubik Dodd Design Collective  
Photographer: Terry Kent | Dwell Imaging



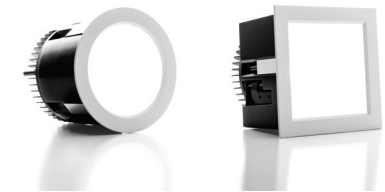
## Downlights

The LED downlight collection from Williams provides an excellent solution for sleek, modern architectural lighting. With 2, 4, 6 and 8 inch apertures available in round and square styles, our downlights create an elegant ambiance in every environment.



### 2D 2 Inch Round & Square

- Zero-flange trim options for modern ceiling
- Beam angles ranging from 8° to 70°
- Fixed or adjustable aim



### 4D 4 Inch Round & Square

- Innovative TrimLock® reflector retention
- Flush, regressed and angled die-cast trims
- Shallow plenum and MRI configurations
- Available on QuickShip



### 6D 6 Inch Round & Square

- IC-rated, new construction and remodel
- ENERGY STAR® certified, Title 24 | JA8 compliant
- Vandal-resistant and non-conductive shower trim options
- Available on QuickShip



### 8D 8 Inch High Output

- High-output illumination for tall ceilings
- Beam angles ranging from 35° to 65°
- Open reflector with 9 finishes

# Cylinders

Form meets function with high-performance architectural cylinders from Williams. Complement the design elements of any space with a multitude of housing, trim and cord finishes in direct or direct/indirect illumination with compact and standard heights in round or square styles.



## 4CR/4CS 4 Inch

- Open, flush, and regressed lens trim options
- Cable, pendant, power cord, wall and surface
- Round and square styles

## 6CR 6 Inch

- TrimLock® reflector retention system
- Beam angles ranging from 10° to 65°
- Power cords available in standard or braided styles

## 8CR 8 Inch

- High output illumination for tall ceilings
- Simple and secure TwistLock™ surface mount installation
- Reflectors create smooth, low-glare radiance



Garmin Headquarters | Kansas City, MO  
Architect: Gould Evans  
Photographer: Michael Robinson Photography



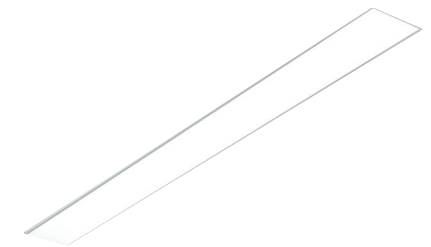
## Continuous

The Williams extensive suite of continuous lighting solutions is designed to provide uninterrupted, low-glare illumination in choice of ambient, perimeter and cove styles. Quickly lay out projects and simplify ordering with our [Linear Product Builder](https://www.hew.com/product-builder) at [hew.com/product-builder](https://www.hew.com/product-builder)



### MX 2 & 4 Inch Ambient

- Flat, glowing edge, drop and regressed lenses
- Suspended, recessed, wall and surface
- Fully illuminated 90° corners
- Specifiable to the inch



### LRX 2, 3, 4 & 5 Inch Linear

- High-performance, seamless illumination at an unbeatable value
- Lift and shift lens for simple installation
- Grid or hardpan ceilings



### CX Cove

- Soft, seamless illumination
- Field-adjustable to the inch for a perfect fit
- Contractor and extruded cove solutions



### PX Perimeter

- Lensed slot, wash or graze distributions
- Straight runs and corners
- Field-adjustable extensions for an exact fit

# Suspended

Featuring classically curved, minimalistic, and modern architectural styles, Williams offer a wide selection of stand-alone and continuous suspended LED luminaires to enhance the built environment.



## LLM Architectural Slimline

- Suspended or surface mount
- Square or round frosted acrylic lens
- Slim, low-profile design



## AX2 2 Inch Architectural

- Slightly wrapped lens creates glowing edge
- Provides direct or direct/indirect light
- Suspended and wall mount styles



## SDI5 Direct/Indirect

- Seven distributions for precision illumination
- Diffuse lens or white louver
- Evenly light the environment with fewer luminaires



## AXA | Architectural Louver

- Contoured housing, end caps and louver
- Three side designs provide subtle uplight
- Flexible mounting with movable hardware



Ming Rose Salon | New York, NY  
Architect: Also Office  
Photographer: David Mitchell Photography




Curology | Carlsbad, CA  
Architect: Trevor Wells | Ware Malcomb  
Photographer: Jason Crider

## Recessed

From budget-friendly commercial troffers to feature-rich, specification grade luminaires, the Williams recessed LED line offers a solution to fit your needs.




### LT Troffer

- Diffuse lens provides smooth illumination
- ISO 5-9 and IP5X rated for cleanroom applications
- Air return option for a cleaner ceiling
- Available on QuickShip 



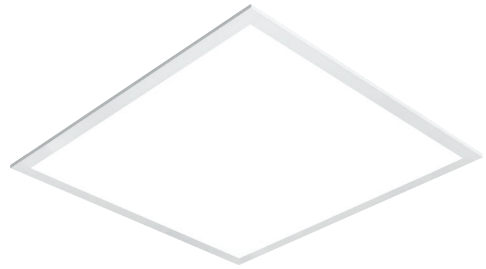
### PT Shallow Plenum Troffer

- Recessed, surface mount and retrofit kit
- Ultra slim 2-3/8" depth for shallow plenum
- Room-side access
- Available on QuickShip 



### AT Architectural Troffer

- Recessed or surface mount
- Back-lit curved lens for visual comfort
- Three distinct center styles



### BP Backlit Flat Panel

- Switchable CCT and lumen outputs with FieldSELECT™
- Recessed, skylight, parabolic and surface mount options
- Integral emergency battery
- Available on QuickShip 🚚



### AP Edge-lit Arched Panel

- Gently curved design provides fresh, unique visual aesthetic
- Low glare, edge-lit optic
- Seamless design prevents light leak



### RND Round Architectural

- Flat, convex, or concave lens profiles
- Recessed, surface and suspended
- 2', 3' and 4' diameters







Voya Investment Management | Atlanta, GA  
Architect: Warner Summers  
Photographer: Nikki Nama Photography

## Surface

Designed to complete your lighting package, Williams surface mount solutions complement our most popular recessed and suspended products, from rounds to continuous light.



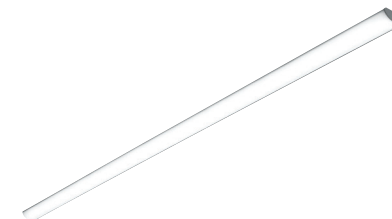
### AW Angled Narrow Wrap

- Uniform downward light distribution and subtle side illumination
- Ribbed diffuse lens compliments the PT Series
- Surface, pendant or Y-hanger mounting options



### NW Narrow Wrap

- Slim design wraparound luminaire at an unbeatable value
- Diffuse acrylic lens enhances uniformity and minimizes glare
- Available on QuickShip 🚚



### SL Slimline Architectural

- Seamless ambient illumination
- Walls, grid and hard surface ceilings
- Extruded aluminum rail for pin-straight lines



### RNDS Round Architectural

- Soft, uniform illumination
- Lift-and-twist lens assembly
- Suspended, recessed and surface

# Medical

From patient areas to surgical suites and behavioral health facilities, the Williams medical product line is engineered to meet the most stringent certification and design requirements, delivering higher optical efficiencies, enhanced color rendering, and enabling a personalized level of light control.

## Surgical



### MST MIL-Spec Troffer

- Complies with MIL-STD-461G specifications
- Green circuit enhances visual clarity for surgical team
- IP65 and ISO 5, Class 100 rated



### HS4/HS6 4 & 6 Inch Downlight

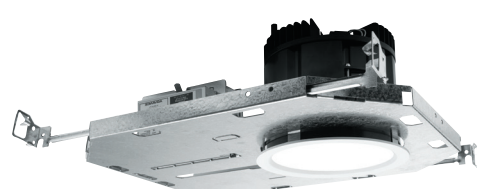
- Complies with MIL-STD-461G specifications
- IP65 and ISO 5, Class 100 rated
- Smooth surface trim and lens materials

## Clean Room



### MCT Clean Room Troffer

- IP65 and ISO 5, Class 100 rated,
- NSF/ANSI 2 certified
- Amber and Red narrow spectrum options for scientific and manufacturing requirements



### HM4/HM6 4 & 6 Inch Downlight

- IP65 and ISO 5, Class 100 rated
- NSF/ANSI 2 certified
- Innovative TrimLock® reflector retention



Via Christi Cath Lab | Wichita, KS  
Architect: GLMV Architecture  
Photographer: Essential Images Photography



AdventHealth Celebration | Celebration, FL  
 Architect: RLF Architects  
 Photographer: Chad Baumer Photography



### AMD Multi-Function Medical

- Ambient, exam, reading and night light outputs with eight configurations
- 2x4 or split 2x2 fixtures provide flexibility
- Room-side access without tools



### MD4 Dual-Function Bed Light

- Single fixture or pair configurations to customize ambient, exam, and reading styles
- Illuminate exam surfaces asymmetrically and meet IESNA guidelines
- Low-voltage controller and wall plate options



### CB Cornice Bed Light

- Architectural, small-scale design in two styles
- Comfortable ambient lighting and highly-functional reading light
- Control direct and indirect lighting independently



### M4P/M6P 4 & 6 Inch MRI

- Round and square downlights with non-ferrous materials for imaging suites
- Innovative TrimLock® reflector retention
- IP65-rated die-cast trim with easy-to-clean flush lens

# Vandal-Resistant

Williams offers a wide variety of vandal-resistant fixtures suited for potentially rough environments such as behavioral health facilities, recreational facilities, schools, correctional institutions, or other vandal prone areas.



## V50 Static Troffer

- Vandal and impact-resistant lens provides added security
- Tamper-resistant screws secure fully gasketed door frame



## VDIL Lensed Troffer

- Tamper-resistant screws secure transparent lensed door
- Choice of acrylic or perforated diffusers
- Designed to minimize contaminants



## AVX Wrap

- Designed for surface, wall, pendant, or corners
- Heavy-duty housing, die-cast end caps, and impact-resistant polycarbonate lens
- ADA compliant in wall mount applications



## V4DR/V6DR 4 & 6 Inch Downlight

- Anti-ligature, tamper-resistant design
- Accepted by the New York State Office of Mental Health for use in inpatient facilities
- Easy-to-clean flush lens






Toyota Logistics Services | Long Beach, CA  
Architect: Lionakis  
Photographer: Fukushima Photography

## High Bay

Constructed for manufacturing facilities, warehouses, and gymnasiums, Williams offers high-performance LED high bay lighting in linear and scalable form-factors up to 74,000 lumens.



### GS Slim High Bay

- Ultra-low 2-9/16" fixture depth
- 55°C maximum ambient rating
- Buy American Act compliant
- Available on QuickShip 



### GH Compact High Bay

- Scalable design up to 72,000 lumens
- High ambient and uplight options
- Optimized for single person installation



### GP Performance High Bay


- 65°C maximum ambient rating
- Narrow, medium and wide distributions with variable uplight options
- Scalable design up to 74,000 lumens

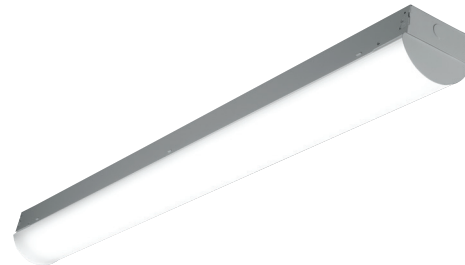
# Industrial

Williams industrial product line features unwavering quality, long-lasting durability, and a wide variety of certifications and mounting options – ideal for wet locations and low ambient temperature environments.



## 75 Narrow Strip

- Round, square, and flat lens styles
- Surface and suspended mounting
- Small profile for coves or confined spaces
- Available on QuickShip 



## 76R Round Lens Strip

- 40°C maximum ambient operating temperature
- Optional reflectors for precise light distribution
- Surface and suspended mounting



## GA Narrow Aisle Light

- Innovative optic design
- Even illumination from floor to ceiling
- Quick and easy installation



## 96/97 Enclosed & Gasketed

- Built tough to resist contaminants
- -40°C minimum operating temperature
- NSF/ANSI 2, IP65, IP66 and IP67 certified, rated for NEMA 4X





Wood Village Municipal Building | Wood Village, OR  
Architect: LRS Architects  
Photographer: David Papazian Photography

## Outdoor

Designed to meet the demands of architects, engineers and lighting designers, Williams outdoor products meet the challenge of form, function, aesthetics and performance.



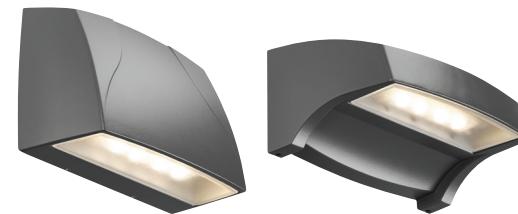
### VA Area Light

- Low-profile, contoured design
- Hinged two-piece enclosure
- Scalable design up to 33,000 lumens



### VF Flood Light

- Six standard NEMA distributions
- Full suite of architectural mounting arms
- Rugged and durable sealed die-cast housing



### VW Wall Pack

- Two distinct styles in two sizes
- Illuminate walkways and entryways
- Uplight and downlight applications
- Available on QuickShip 🚚



### VG Surface/Garage Light

- Rugged and durable IP66 rated housing
- Designed for quick install
- Provides security light levels with reduced glare



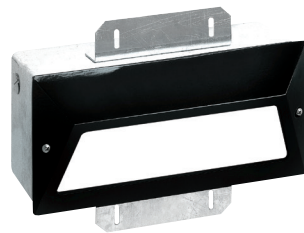
### OSA Aluminum Bollard

- Square and round styles available in 6 and 8 inch diameters
- Flat, peak and dome tops provide variety
- Easy access to internal components



### OSC Concrete Bollard

- Square and round styles available in 10 and 12 inch diameters
- Easy access to internal components
- Shielding options tailor distribution styles



### S10/S15 Step Lights

- Choice of open, hooded and grill faceplates in two sizes
- Available with frosted or opal lens
- Sealed for weather tight performance







Arvest Bank | Oklahoma City, OK  
Architect: FSB  
Photographer: Simon Hurst Photography

## Lighting Controls

### Bluetooth® Lighting Controls

Gateway-free technology from Avi-on plus integrated fixture controls from Williams combine to deliver a turnkey solution that makes commissioning and setup a breeze.



### In-Fixture Solutions

Through our partnerships with industry leaders, we bring sophisticated lighting controls and specification-grade LED luminaires together to enhance user experiences in the built environment.



### Data-Driven Systems

With over 80 PoE-enabled luminaires connected to environmental sensors and software through network integration, we provide an IoT lighting backbone for healthy, smart buildings.

# Human-Centric Lighting

## Tunable RGBW

Create rich, vibrant designs with lasting visual impact using the full visible light spectrum to accent architectural elements in lobbies, energize the mood at event venues, and highlight displays in retail spaces.

## Tunable White

Support human-centric design through adaptive, individualized lighting using tunable white light to promote wellness in healthcare facilities, enhance concentration in classrooms, and improve productivity in workspaces.

## Dim to Warm

Mimic the comfortable, welcoming glow of incandescents with warm-dimming technology to provide intimate lighting in restaurants, hotels, and high-end residences.

## FieldSELECT™

Easily change the color temperature and lumen output on-site with built in switches, providing ultimate flexibility.



Williams and BIOS have partnered to bring you state-of-the-art LED white light circadian solutions in high-performance luminaires.



BOK Financial | Overland Park, KS  
Photographer: Brad Hull



**H.E. WILLIAMS, INC.**

831 West Fairview Ave | Carthage, MO 64836

417-358-4065

[hew.com](http://hew.com)

Cover: Ceridian Headquarters | Bloomington, MN  
Architect: Nelson | Photographer: Brandon Stengel  
Rev.04/23/24