

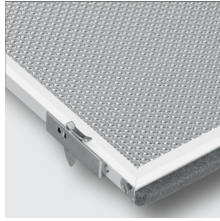
TROFFER OPTIONS

DOORS, SHIELDING, AND GRID RISER



TROFFER DOOR OPTIONS

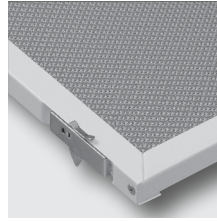
REGRESSED ALUMINUM DOOR FRAME



For all luminaires with an aluminum door frame. For regressed door frame, enter "R" in catalog number.

Example: 50G-S24-332-**RA**12125

STEEL DOOR FRAME

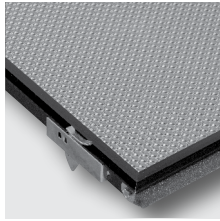


Specify with Williams' Series 11, 12, and 50 in 1'x4', 2'x2', and 2'x4' sizes. For a 20-gauge flat steel door, enter "S" in the catalog number.

Example: 50G-S24-332-**SA**12125

Note: Non-air handling/return fixtures only.

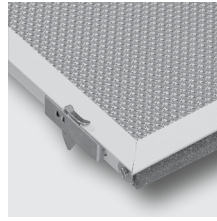
BLACK DOOR FRAME



For all luminaires utilizing a door frame. For black door frame, enter "B" in catalog number.

Example: 50G-S24-332-**RBA**12125

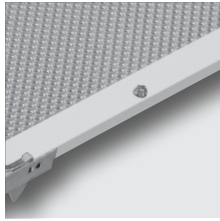
FLAT ALUMINUM DOOR FRAME



For all luminaires equipped with an aluminum door frame. For flat aluminum door frame, enter "F" in the catalog number.

Example: 50G-S24-332-**FA**12125

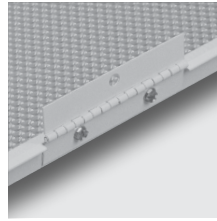
TAMPER RESISTANT DOOR FRAME



For use with all static luminaires equipped with a flat aluminum or steel door frame. For two tamper-resistant screws on latch side of door frame, specify "TP" as an option in the catalog number.

Example: 50G-S24-332-**FA**12125-**TP**-EB2/1-120

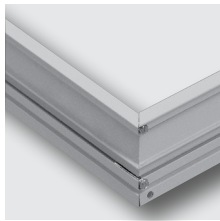
PIANO HINGE DOOR FRAME



For all luminaires equipped with a full aluminum door frame. For two 2-3/4" piano-type hinges in place of standard "T" hinges, add suffix "-P/H DOOR".

Example: 50G-S24-332-**RA**12125-**P/H DOOR**

GRID RISER



The Grid Riser decorative trim system elevates the grid troffer 2" above the ceiling plane for a cove or skylight appearance. Compatible with all Williams NEMA Type "G" luminaires, the Grid Riser easily fits into the ceiling system where the luminaire is positioned into the top of the riser. The top edge of the riser extends around the entire perimeter of the luminaire. Extruded .080" aluminum construction. Available in choice of colors and sizes—consult factory for special orders.

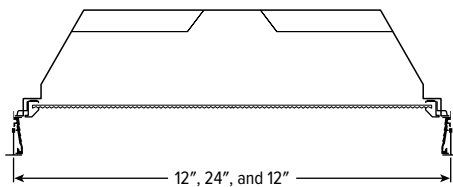
Example: 2GR-2-4-W-E

MOUNTING

Must specify if installing standalone S or E (does not apply to 2x2 fixtures)

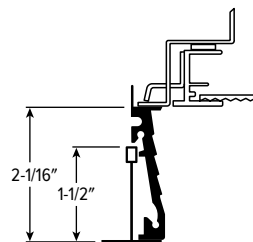
E End to end
S Side by side

TYPICAL RECESSED FIXTURE

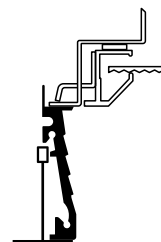


STATIC DOOR FRAME

FLAT

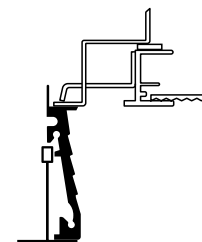


REGRESS

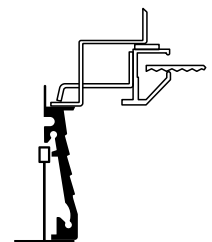


FLOATING DOOR FRAME

FLAT



REGRESS



SEE BACK FOR TROFFER SHIELDING OPTIONS

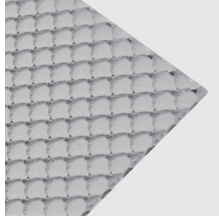


TROFFER OPTIONS

DOORS, SHIELDING, AND GRID RISER

TROFFER SHIELDING OPTIONS

PATTERN #12 ACRYLIC



CLEAR

- A12125 Acrylic, pattern #12, .125" thick
- A12140 Acrylic, pattern #12, .140" thick
- A12187 Acrylic, pattern #12, .187" thick

FROSTED

- AF12095 Frosted acrylic, pattern #12, .095" thick
- AF12125 Frosted acrylic, pattern #12, .125" thick

1/2" X 1/2" X 1/2" WHITE LOUVER



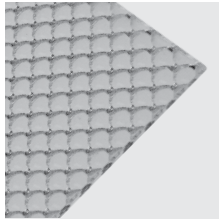
LA45

White molded acrylic louver, 45° shielding angle, nominal 1/2" x 1/2" x 1/2"

PL45

White molded styrene louver, 45° shielding angle, nominal 1/2" x 1/2" x 1/2"

PATTERN #12 VANDAL LENS

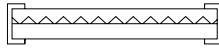


CLEAR

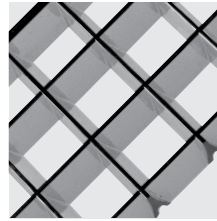
- VL Acrylic, pattern #12, .125" thick chemically welded to clear polycarbonate, .125" thick

FROSTED

- VLF Frosted acrylic, pattern #12, .125" thick chemically welded to clear polycarbonate, .125" thick



1/2" X 1/2" X 1/2" SILVER LOUVER



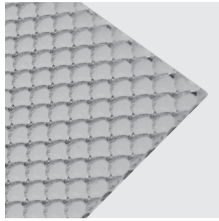
PC1AS

Parabolic louver, silver acrylic, nominal 1/2" x 1/2" x 1/2"

PC1SS

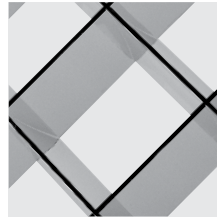
Parabolic louver, silver styrene, nominal 1/2" x 1/2" x 1/2"

PATTERN #12 POLYCARBONATE



- PC12187 Polycarbonate, pattern #12, .187" thick

1-1/2" X 1-1/2" X 1" SILVER LOUVER



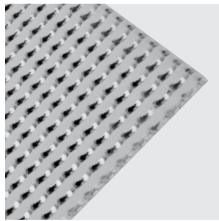
PC2AS

Parabolic louver, silver acrylic, nominal 1-1/2" x 1-1/2" x 1"

PC2SS

Parabolic louver, silver styrene, nominal 1-1/2" x 1-1/2" x 1"

PATTERN #19 ACRYLIC



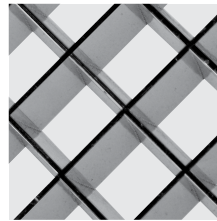
CLEAR

- A19156 Acrylic, pattern #19, .156" thick
- A19187 Acrylic, pattern #19, .187" thick

FROSTED

- AF19156 Frosted acrylic, pattern #19, .156" thick

3/4" X 3/4" X 1/2" SILVER LOUVER



PL3AS

Parabolic louver, silver acrylic, nominal 3/4" x 3/4" x 1/2"

PL3SS

Parabolic louver, silver styrene, nominal 3/4" x 3/4" x 1/2"

