

CATALOG #: \_\_\_\_\_

TYPE: \_\_\_\_\_

PROJECT: \_\_\_\_\_



### FEATURES

- Support human-centric design with adaptive, individualized lighting using tunable white light
- Create elegant spaces with a seamless, continuous row of illumination
- Specify in one inch increments to create a perfect fit
- Flat, glowing edge, drop and regressed lenses give designers a variety of looks
- High-performance up to 123 lm/W
- Linear extrusion contains snap-in light rails for ease of installation and maintenance
- Versatile MX2 system includes recessed, surface, suspended and in-wall mounting, see [hew.com](http://hew.com)
- Factory installed row alignment system creates straight rows with ease
- Corner configurations available, see Product Builder at [hew.com/product-builder](http://hew.com/product-builder)
- Diffuse acrylic lens provides uniform illumination for visual comfort
- Made Right Here® in the USA

### SPECIFICATIONS

- HOUSING** – Extruded aluminum with die-cast end plates.
- SHIELDING** – Extruded, flat, diffuse acrylic lens.
- FINISH** – Textured matte white polyester TGIC powder coat bonded to phosphate-free, multi-stage pretreated metal. All parts painted after fabrication to facilitate installation, increase efficiency, and inhibit corrosion.
- ELECTRICAL** – High-quality mid-power LED board. L70 > 60,000 hours per IES TM-21. Tunable White products use LEDs of multiple CCTs and may produce a perceptibly different shade of white from single-CCT products at the same CCT. All CCTs are within 3 MacAdam ellipses.
- MOUNTING** – Surface.
- LISTINGS** –
  - cCSAus certified as luminaire suitable for dry or damp locations.
  - Complies with the Buy American Act and other federal regulations. Request certification at [hew.com/baa](http://hew.com/baa).
- WARRANTY** – 5-year limited warranty, see [hew.com/warranty](http://hew.com/warranty).

### ORDERING EXAMPLE: MX2S - 12'00 - L8/8TW - F - OPTIONS - CONTROL/DALI - UNV

#### SERIES ILLUMINATED LENGTH

**MX2S** Lengths specified in feet and inches using 1" increments, 2' minimum.  
Example: 12'00 = 12'-0"

#### Product Builder

Easily build shapes & simplify ordering with the Williams Linear Product Builder at [hew.com/product-builder](http://hew.com/product-builder) <sup>[1]</sup>



LUMENS <sup>[2]</sup>	COLOR	SHIELDING <sup>[3]</sup>
<b>L8</b> 800lm	<b>8TW</b> Tunable white (80 CRI, 3000K-5000K)	<b>F</b> Flat, diffuse acrylic
		<b>FW</b> Flat, diffuse acrylic with widespread optic
		<b>G</b> Diffuse acrylic with glowing edge
		<b>D</b> Diffuse acrylic with 1" drop
		<b>R</b> Regressed diffuse acrylic, 1" <sup>[4]</sup>

#### OPTIONS

See page 3 for FINISH OPTIONS.

**EM/10WLP** Low-profile 10-watt emergency battery <sup>[6]</sup>

**EM/10WRM** Remote mount 10-watt emergency battery <sup>[7]</sup>

**(L\_\_\_)** Additional lower lumen packages available <sup>[8]</sup>  
Example: 600 lumens = MX2S-12'00-L8/8TW-(L6)

#### CONTROL

– None

See page 3 for Additional Control Options. <sup>[9]</sup>

#### DRIVER <sup>[5]</sup>

**DALI** Driver prewired for DALI applications

**DIM** (1) 0-10V signal to control dimming

(1) 0-10V signal to control CCT

**DMX** Driver prewired for DMX applications

**PSQ** Lutron T-Series 2-channel tunable white 1%

#### VOLTAGE

**120** 120V

**277** 277V

**UNV** 120-277V

### NOTES

<sup>1</sup> See page 3 for CORNER DETAILS.

<sup>2</sup> Lumens per foot output based on F Shielding, 80 CRI/4000K CCT. Actual performance may vary ± 5%. See page 2 for FIXTURE PERFORMANCE DATA. Additional lumen packages available, see Options.

<sup>3</sup> G, D, and R Shielding not available with corner configurations. See page 2 for SHIELDING DETAILS.

<sup>4</sup> Increases fixture height. See page 2 for SHIELDING DETAILS.

<sup>5</sup> See page 4 for DRIVER DETAILS.

<sup>6</sup> Not available with fixtures less than 4'.

<sup>7</sup> See page 2 for FIXTURE DETAILS.

<sup>8</sup> (L4) lumen package minimum. Specify in increments of 100 nominal lumens. Option must be specified with next higher lumen package.

<sup>9</sup> See page 3 for SENSOR PLACEMENT DETAILS.



# MX2S tunable WHITE

## 2" Continuous – Surface

### FIXTURE PERFORMANCE DATA

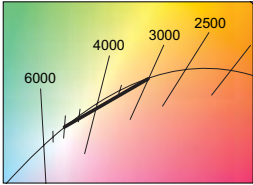
L8	PER FOOT		
	DELIVERED LUMENS	WATTAGE	EFFICACY (lm/W)
	810	6.6	123

- Photometrics tested in accordance with IESNA LM-79. Results based on F shielding, 80 CRI/4000K CCT, average wattage for 120V through 277V input, and 25°C ambient temperature. Actual performance may vary +/-5%.
- To calculate lumen output in emergency mode, multiply the battery wattage by the efficacy.
- Use multiplier tables to calculate additional options.

### MULTIPLIER TABLES

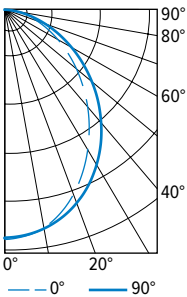
CCT	CONVERSION FACTOR	
	LUMENS	WATTAGE
3000K	0.95	1.04
3500K	0.98	1.02
4000K	1.00	1.00
5000K	0.96	1.04

SHIELDING	
LENS	CONVERSION FACTOR
D	1.05
F	1.00
G	0.98
FA	0.96
FW	0.92
R	0.91



### PHOTOMETRY

MX2S-4'00-L8/8TW-F-DALI Total Luminaire Output: 3240 lumens; 26.4 Watts | Efficacy: 123 lm/W | 80 CRI; 4000K CCT

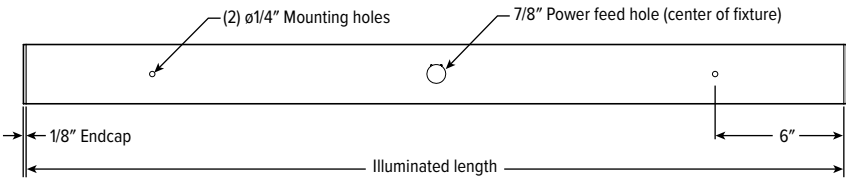


VERTICAL ANGLE	HORIZONTAL ANGLE			ZONAL LUMENS
	0°	45°	90°	
0	1432	1432	1432	
5	1419	1423	1426	135
15	1348	1335	1321	375
25	1209	1167	1125	536
35	1016	953	898	597
45	797	732	674	566
55	575	518	471	466
65	367	328	297	328
75	185	170	158	182
85	46	50	50	56
90	6	11	12	

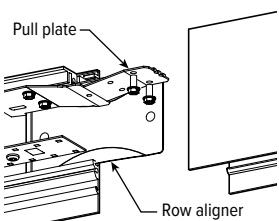
LUMEN SUMMARY	ZONE	LUMENS	% FIXTURE
	0 - 30	1046	32
	0 - 40	1643	51
	0 - 60	2675	83
	0 - 90	3240	100
	0 - 180	3240	100

### FIXTURE DETAILS

#### BACK VIEW



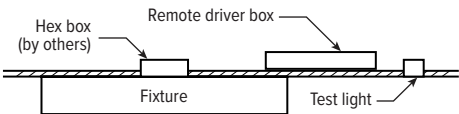
#### ROW ALIGNMENT SYSTEM



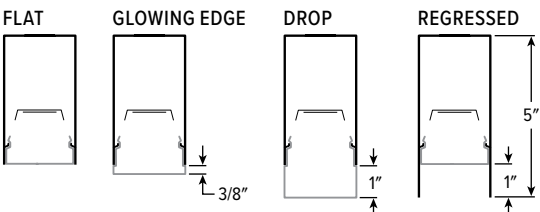
Installer friendly row aligners ensure seamless joining between fixtures while factory installed pull plate locks extrusions in place without disassembly of fixture internals.

#### REMOTE MOUNT BATTERY

Max remote distance 50'.



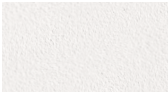
### SHIELDING DETAILS



# MX2S tunable WHITE 2" Continuous – Surface

## FINISH OPTIONS

WHITE



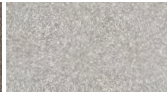
BLACK



BRONZE



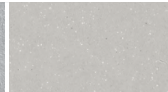
NICKEL



SILVER



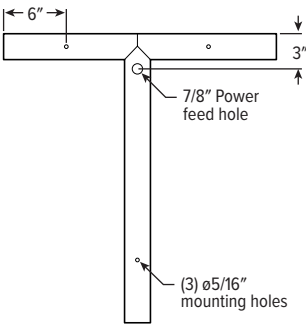
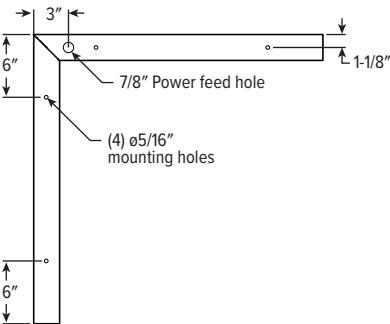
ALUM



For custom color, please specify RAL code or a manufacturer code with description. All custom colors other than RAL require two sample swatches, minimum 1" square.

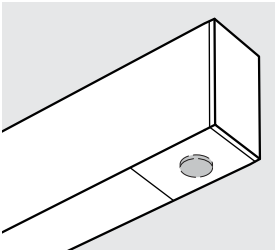
## CORNER DETAILS

### BACK VIEW



Note: Corner orientation determined in field. Feeder corner end cap shipped separately.

## SENSOR PLACEMENT DETAILS



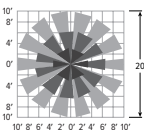
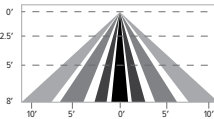
## ADDITIONAL CONTROL OPTIONS

**OCCWS-FS-305-L6-PP-120/277** Wattstopper PIR motion and daylight hold off sensor with power pack, 120/277V

SPECIFICATIONS	
TYPE	PIR Motion + Daylight Hold Off
MOUNTING HEIGHT	8'
LENS	Indoor, non-wet location use
DETECTION ANGLE	360°
TEMPERATURE RANGE	-40° to 55°C
RELATIVE HUMIDITY	5% to 95%, non-condensing
COMMISSIONING	Dials under lens

### SENSOR COVERAGE PATTERNS

8' height: ø20' coverage



### SENSOR DETAIL



Dimensions: ø1-5/16"

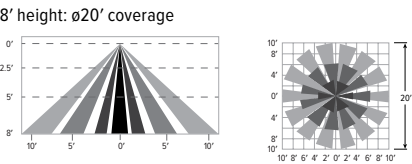


# MX2S tunable WHITE 2" Continuous – Surface

OCCWS-LMFS-601-PP-120/277 Wattstopper PIR motion and daylight sensor with power pack, 120/277V

SPECIFICATIONS	
TYPE	PIR Motion + Daylight
MOUNTING HEIGHT	8' – 12'
LENS	Up to 300 sq/ft coverage
DETECTION ANGLE	360°
TEMPERATURE RANGE	0° to 50°C
RELATIVE HUMIDITY	0 to 90%, non-condensing
COMMISSIONING	App (iOS or Android)

## SENSOR COVERAGE PATTERNS



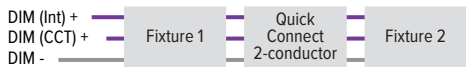
## SENSOR DETAIL



Dimensions: ø1-5/16"

## DRIVER DETAILS

### DIM



### DMX



### DALI



### LUTRON T-SERIES

