

CATALOG #: \_\_\_\_\_

TYPE: \_\_\_\_\_

PROJECT: \_\_\_\_\_



## FEATURES

- Deliver scalable, data-driven smart buildings with PoE-enabled fixtures and controls
- Support human-centric design with adaptive, individualized lighting using tunable white light
- Specify in one inch increments to create a perfect fit
- High-performance up to 137 lm/W
- Flat, glowing edge, drop and regressed lenses give designers a variety of looks
- Moveable mounting hardware easily slides along the length of the fixture providing variable mounting points for continuous rows
- Factory installed row alignment system creates straight rows with ease
- Corner configurations available, see Product Builder at [hew.com/product-builder](http://hew.com/product-builder)
- Made Right Here® in the USA

## SPECIFICATIONS

- HOUSING** – Extruded aluminum with die-cast end plates.
- SHIELDING** – Extruded, flat, diffuse acrylic lens.
- FINISH** – Textured matte white polyester TGIC powder coat bonded to phosphate-free, multi-stage pretreated metal. All parts painted after fabrication to facilitate installation, increase efficiency, and inhibit corrosion.
- ELECTRICAL** – High-quality mid-power LED board. L70 > 6-,000 hours per IES TM-21. Low-voltage DC fixture, to be fed by Class 2 power supply. Tunable White products use LEDs of multiple CCTs and may produce a perceptibly different shade of white from single-CCT products at the same CCT. All CCTs are within 3 MacAdam ellipses.
- MOUNTING** – Suspended. 1/16" diameter adjustable steel leveling aircraft cable and mounting hardware necessary for grid and hardpan ceiling applications provided.
- LISTINGS** –
  - cCSAus certified as luminaire suitable for dry or damp locations.
  - Complies with the Buy American Act and other federal regulations. Request certification at [hew.com/baa](http://hew.com/baa).
- WARRANTY** – 5-year limited warranty, see [hew.com/warranty](http://hew.com/warranty).

## SYSTEM REQUIREMENTS

- PoE-ready luminaires are connected to building power systems through network integration and require other components for complete PoE lighting system
- For additional PoE info, see [hew.com/poe](http://hew.com/poe)

## ORDERING EXAMPLE: MX2D - 12'00 - P8/835 - F - AC/D48 - OPTIONS - POE PR

**SERIES**  
**MX2D** Down  
**MX2U** Up  
**ILLUMINATED LENGTH**  
Lengths specified in feet and inches using 1" increments, 2" minimum.  
Example: 12'00 = 12'-0"

**Product Builder**  
Easily build shapes & simplify ordering with the Williams Linear Product Builder at [hew.com/product-builder](http://hew.com/product-builder) <sup>[1]</sup>



LUMENS <sup>[2]</sup>	CRI	CCT	SHIELDING	MOUNTING (EXAMPLE: AC/D48) <sup>[3]</sup>		
P8 800lm	8 80	27 2700K	F Flat, diffuse acrylic	Prefix	Type	Length
	9 90 <sup>[4]</sup>	30 3000K	FW Flat, diffuse acrylic with widespread optic	AC/	D 1" grid & hardpan	24 24"
		35 3500K	FA Flat, diffuse acrylic with asymmetric optic <sup>[5]</sup>		N 9/16" grid	48 48"
		40 4000K	G Diffuse acrylic with glowing edge <sup>[6]</sup>		S Slot grid	96 96"
		50 5000K	D Diffuse acrylic with 1" drop <sup>[7]</sup>	MSF_	Microstem, 1/4" IPS, specify length in inches <sup>[9]</sup>	
		TW Tunable white (80 CRI, 3000K-5000K)	R Regressed diffuse acrylic, 1" <sup>[8]</sup>			

**OPTIONS**  
See page 3 for **FINISH OPTIONS**.

**CONTROL <sup>[10]</sup>**  
**POE PR** Power over Ethernet-ready

## NOTES

- See page 4 for CORNER DETAILS.
- Lumens per foot output based on F Shielding, 80 CRI, 3500K for single CCT and 4000K for TW. Actual performance may vary ± 5%. See page 2 for FIXTURE PERFORMANCE DATA.
- See page 3 for MOUNTING DETAILS.
- Extended lead times may apply. Consult factory for availability.
- Not available with Tunable White.
- MX2U only.

- Not available with corner configurations.
- MX2D only. Not available with corner configurations.
- Not available with corner configurations. Increases fixture height. See page 3 for SHIELDING DETAILS.
- Power cord does not run through microstem.
- For additional PoE connection details, consult factory.



# MX2 PoE | tunable WHITE

## 2" Continuous – Suspended

### FIXTURE PERFORMANCE DATA

#### STATIC WHITE

DOWN (PER FOOT)			UP (PER FOOT)		
DELIVERED LUMENS	WATTAGE	EFFICACY (lm/W)	DELIVERED LUMENS	WATTAGE	EFFICACY (lm/W)
776	6.3	123	862	6.3	137

#### TUNABLE WHITE

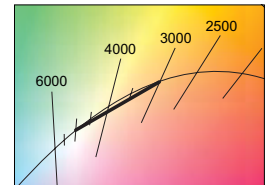
DOWN (PER FOOT)			UP (PER FOOT)		
DELIVERED LUMENS	WATTAGE	EFFICACY (lm/W)	DELIVERED LUMENS	WATTAGE	EFFICACY (lm/W)
778	6.3	123	865	6.3	137

- Photometrics tested in accordance with IESNA LM-79. Results based on 80 CRI, 3500K CCT static white, 4000K CCT tunable white, and 25°C ambient temperature. Actual performance may vary +/-5%.
- Use multiplier tables to calculate additional options.

#### MULTIPLIER TABLES

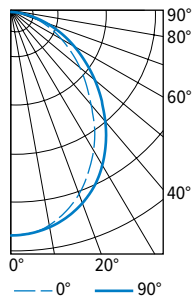
	COLOR TEMPERATURE	
	CCT	LUMENS
80 CRI	STANDARD	TUNABLE WHITE
	2700K	0.97
	3000K	0.99
	3500K	1.00
	4000K	1.03
	5000K	1.06
90 CRI	2700K	0.80
	3000K	0.82
	3500K	0.83
	4000K	0.86
	5000K	0.89

SHIELDING	
LENS	CONVERSION FACTOR
D	1.05
F	1.00
G	0.98
FA	0.96
FW	0.92
R	0.91



### PHOTOMETRY

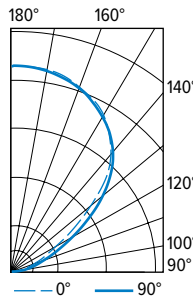
**MX2D-4'00-P8/835-F** Total Luminaire Output: 3104 lumens; 25.2 Watts | Efficacy: 123.2 lm/W | 80 CRI; 3500K CCT



CANDLEPOWER DISTRIBUTION	VERTICAL ANGLE	HORIZONTAL ANGLE			ZONAL LUMENS
		0°	45°	90°	
	0	1373	1373	1373	
	5	1362	1362	1361	130
	15	1299	1287	1265	362
	25	1171	1131	1085	521
	35	976	917	864	575
	45	754	690	632	536
	55	540	491	444	442
	65	350	314	285	314
	75	176	162	150	174
	85	43	46	47	52
	90	1	4	5	

LUMEN SUMMARY	ZONE	LUMENS	% FIXTURE
	0 - 30	1013	33
	0 - 40	1588	51
	0 - 60	2565	83
	0 - 90	3104	100
	0 - 180	3104	100

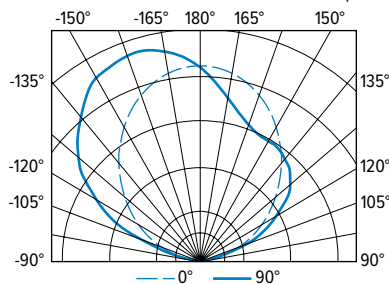
**MX2U-4'00-P8/835-F** Total Luminaire Output: 3448 lumens; 25.2 Watts | Efficacy: 136.8 lm/W | 80 CRI; 3500K CCT



CANDLEPOWER DISTRIBUTION	VERTICAL ANGLE	HORIZONTAL ANGLE			ZONAL LUMENS
		0°	45°	90°	
	90	6	7	8	
	95	51	30	26	39
	105	157	121	106	137
	115	321	275	233	277
	125	600	570	476	494
	135	914	903	860	686
	145	1133	1136	1125	707
	155	1271	1276	1289	589
	165	1363	1365	1376	386
	175	1404	1396	1406	133
	180	1402	1402	1402	

LUMEN SUMMARY	ZONE	LUMENS	% FIXTURE
	90 - 120	453	13
	90 - 130	947	28
	90 - 150	2340	68
	90 - 180	3448	100
	0 - 180	3448	100

**MX2U-4'00-P8/835-FA** Total Luminaire Output: 3311 lumens; 25.2 Watts | Efficacy: 131 lm/W | 80 CRI; 3500K CCT



CANDLEPOWER DISTRIBUTION	VERTICAL ANGLE	HORIZONTAL ANGLE					ZONAL LUMENS
		0°	45°	90°	135°	180°	
	90	2	3	1	3	2	
	95	36	29	20	29	36	46
	105	173	202	166	202	173	222
	115	332	399	409	399	332	432
	125	489	576	605	576	489	569
	135	649	688	734	688	649	610
	145	808	751	790	751	808	569
	155	954	800	803	800	954	457
	165	1061	914	880	914	1061	300
	175	1121	1055	1033	1055	1121	106
	180	1121	1121	1121	1121	1121	

LUMEN SUMMARY	ZONE	LUMENS	% FIXTURE
	90 - 120	700	21
	90 - 130	1269	38
	90 - 150	2448	74
	90 - 180	3310	100
	0 - 180	3311	100

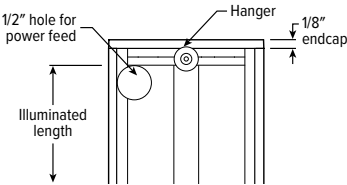


# MX2 PoE | tunable **WHITE** 2" Continuous – Suspended

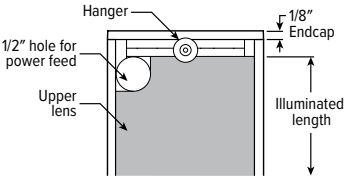
## FIXTURE DETAILS

Stand-alone fixtures up to 12' in length will require two suspension cables.

### MX2D BACK VIEW

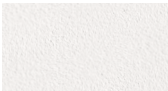


### MX2U BACK VIEW



## FINISH OPTIONS

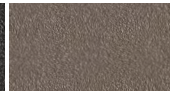
### WHITE



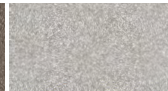
### BLACK



### BRONZE



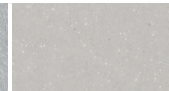
### NICKEL



### SILVER



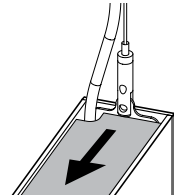
### ALUM



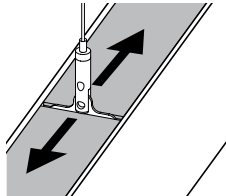
For custom color, please specify RAL code or a manufacturer code with description. All custom colors other than RAL require two sample swatches, minimum 1" square.

## MOUNTING DETAILS

### AIRCRAFT CABLE

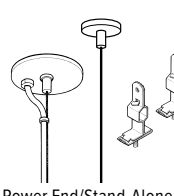


Field-adjustable standalone hanger.

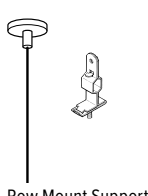


Joiner hanger slides to any position along extrusion. Lens may be cut to fit hanger.

### STANDARD HARDWARE



Power End/Stand-Alone

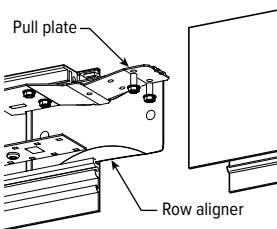


Row Mount Support

#### Notes:

- Fixtures are provided with adjustable length aircraft cables and mounting hardware, must specify.
- Electrical supply is brought into the feeder (or stand-alone) fixture, either as part of a row or as an individual mount unit. Power feed locations are at end of fixture.
- One 5" canopy included for each feeder fixture. One 2" canopy included for each additional fixture required in a row.

### ROW ALIGNMENT SYSTEM



Installer friendly row aligners ensure seamless joining between fixtures while factory installed pull plate locks extrusions in place without disassembly of fixture internals.

### AIRCRAFT CABLE



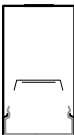
### MICROSTEM



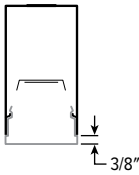
## SHIELDING DETAILS

### DOWN

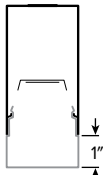
#### FLAT



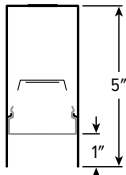
#### GLOWING EDGE



#### DROP



#### REGRESSED



### UP

#### FLAT



#### GLOWING EDGE



CORNER DETAILS

